



&BEYOND

DISCOVER SUYIAN CONSERVANCY

&Beyond Suyian Homestead

A sole-use safari home for up to 10 guests, designed for slower safaris, shared moments, and effortless living. Here, space, time, and the wild unfold entirely on your terms.

DISCOVER SUYIAN CONSERVANCY
Beyond Suyian Homestead

Why stay?

1 A HOME, NOT A STAY
Settle into a sole-use safari home where everything adapts to you. No set schedules, no shared spaces, and no interruptions. Just comfort, privacy, and the feeling of being entirely at home.

2 YOUR RHYTHM, UNINTERRUPTED
Days unfold entirely on your terms. Come together, drift apart, head out, or stay in, with a private guide and vehicle shaping each experience around your curiosity.

3 IMMERSIVE EXPERIENCES
From game drives and guided nature walks to horseback safaris, camel experiences, yoga, wellness treatments, and cultural visits, each day brings new ways to experience Suyian Conservancy.

4 DESIGNED BY THE LAND
Inspired by rock formations and ridgelines, Suyian Homestead feels shaped by its surroundings. Local materials, craftsmanship, and colour create a space that feels grounded, layered, and deeply connected.

5 SERVICE THAT CARES
A dedicated team takes care of everything with quiet precision. Present when needed and unobtrusive when not, they make each day feel effortless, natural, and completely your own.



Lodge amenities



1

INFINITY POOL

Unwind in the 15-m (49-ft) infinity pool overlooking the Sanctuary, made for slow swims, long pauses, and watching the landscape shift around you.



2

HOUSE KITCHEN

The open, family-style kitchen is where meals feel personal and relaxed, with a private chef shaping each dining moment around your rhythm.



3

TASTE OF SUYIAN

Tailored to your palate, menus draw from kitchen gardens, local produce and northern Kenyan ingredients, with meals that feel fresh and naturally abundant. Seasonal produce, local sourcing and flexible dining throughout the day bring an authentic, flavour-led approach to every meal.



4

PRIVATE COURTYARDS

Restful outdoor spaces are woven throughout Suyian Homestead, offering room to read, reflect, or simply spend time on your own.

Lodge amenities



5

OUTDOOR DINING

Enjoy the relaxed outdoor pergola with a pizza oven and grill, designed for shared meals, easy conversation, and casual dining in the open air.



6

GYM AND YOGA

The well-equipped gym offers a dedicated space to move, stretch or reset, whenever it suits you. Outdoors, a shaded yoga deck invites daily sessions shaped around the natural rhythm of the day.



7

WELLNESS TREATMENTS

Restorative wellness treatments fit naturally into your day, bringing a deeper sense of calm, ease, and restoration, all enjoyed in the privacy of your suite.

DISCOVER SUYIAN CONSERVANCY
&Beyond Suyian Homestead



Lodge overview

LODGE

Maximum number of guests	10 (11 guests with 1 Triple Suite)
Number of rooms	5 Suites, including 1 Master Suite and 4 Suites (1 Suite can be converted to a Triple Suite on request)
Family accommodation	Exclusive-use homestead 1 Triple Suite available on request Child policy includes guests up to 16 years old Cots are available on request, using standard camping cot setup
WILDchild programme	Yes
Pilot / Guide accommodation	No, available at Suyian Lodge only
Distance between rooms	Exclusive-use homestead
Check-in and check-out times	14h00 / 11h00

DINING

Food / Dietary options	Special dietary requests are available and must be booked in advance
Private butler service	Yes
Plated service	Yes
Private dining	Yes

PAYMENT TYPES

Credit cards accepted	Visa, Diners, Amex and Mastercard
Currency	All major currencies accepted

BEYOND SUYIAN HOMESTEAD

FACILITIES

Power	24-hour power (100% solar with generator backup)
Internet access	Yes, Wi-Fi throughout
Wine store or cellar	No
Boma	No
Bar	Yes
Interactive kitchen	Yes
Swimming pool	Yes
Wellness offering	Healing Earth spa treatments offered in-room
Fitness centre	Yes, well-equipped gym and yoga space
Conference facilities	No
Wedding and blessings	Yes
Wheelchair accessibility	No
Complimentary laundry service	Yes
Beyond Safari Shop	Yes, at Suyian Lodge

OTHER

Vehicle type	6-seater private vehicle
Private 4x4 safari vehicle	Yes, two private vehicles
Private photographic vehicle	Yes, special camera armrest mounts and sandbags in each vehicle

DISCOVER SUYIAN CONSERVANCY
 Beyond Suyian Homestead

Inclusions

RATE INCLUDES

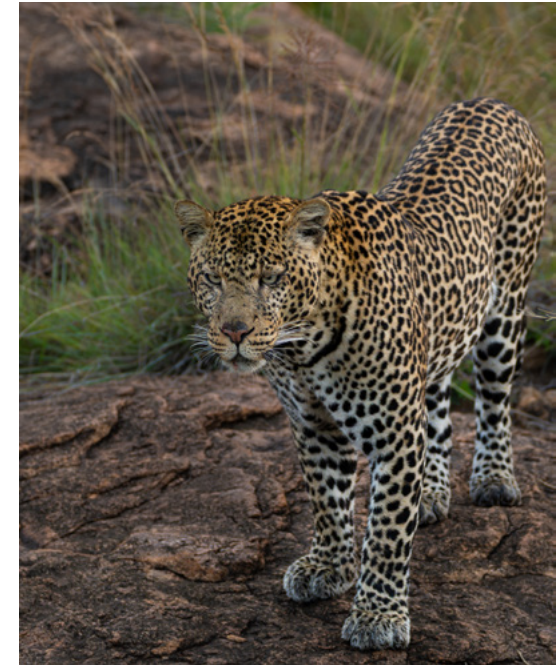
Accommodation	✓
Three meals daily	✓
Soft drinks, house wines, local brand spirits and beers, tea and coffee, and refreshments on safari game drives	✓
Laundry	✓
Two private vehicles and guides	✓
Twice-daily safari game drives, nature walk with an experienced guide, active ranching tour, cultural experience, horseback riding safari, camel experience, yoga, and local community visit*	✓
The exclusive use of one pair of SWAROVSKI OPTIK binoculars per room to share for the duration of your stay	✓
Guides' Journal with illustrated wildlife and vegetation checklist, and an area map with illustrated Star Birds checklist	✓
WILDchild programme	✓
Emergency medical evacuation insurance	✓
VAT	
Transfers to and from the lodge airstrip	✓

RATE EXCLUDES

Administration fee	✗
Telephone calls	✗
Safari Shop purchases	✗
Gratuities	✗
All items of a personal nature	✗
Champagne, cognac, fine wines, premium brand spirits and cigars	✗
Government bed levy	✗
Conservancy or park fees	✗
Landing fees	✗
Additional private vehicles	✗
Helicopter flights and wellness treatments	✗
Weddings and blessings	✗

*These activities may incur an additional charge for groups

NOTE: Unmanned Aerial Vehicles: Please be advised that the use of unmanned aerial vehicles (drones) is prohibited in the conservation areas where we operate, until such a time as their impact on wildlife and anti-poaching initiatives can be assessed. This rule will apply throughout Africa, as our partners in various countries and regions have adopted a similar stance.





&BEYOND

&BEYOND SUYIAN HOMESTEAD

Suites



Where living comes naturally

Each space within Suyian Homestead is shaped by the land around it. Open, layered, and quietly comfortable, this private safari home invites you to settle in and stay awhile.



MASTER SUITE BATHROOM



MASTER SUITE WITH PRIVATE LOUNGE



SUYIAN HOMESTEAD EXTERIOR

DISCOVER SUYIAN CONSERVANCY
 Beyond Suyian Homestead Accommodation

MASTER SUITE

1 Suite / Max. 2 guests



A SPACE OF ITS OWN

Set apart from the rest of Suyian Homestead, the Master Suite offers a deeper sense of privacy, with its own sitting area, dressing space, and outdoor courtyard.

ROOM FACILITIES

Suite size	84 m ² (904 ft ²)
Private veranda	Yes
Personal bar	Yes
Personal coffee station	Yes
Air conditioning / heating	Yes
Overhead fans	Yes
Mosquito nets	Yes
Bath	Yes
Shower	Yes
Separate WC	Yes
Telephone	Yes
Hairdryer	Yes
Internet access	Yes
In-room safe	Yes
Plug type	UK, with USB and USB-C adaptors All rooms have international adaptors
Triple bed option	Yes, 1 Triple Suite using a single bed configuration
Twin bed option	No
Double bed option	Yes
Wheelchair accessibility	No



Master Suite layout

DISCOVER SUYIAN CONSERVANCY
 Beyond Suyian Homestead Accommodation

SUITE

4 Suites / Max. 2 guests per Suite



YOUR OWN CORNER OF THE WILD

Each Suite is positioned to capture a different view, a different light, a different mood – connected to the home, yet entirely your own.

ROOM FACILITIES

Suite size	49 m ² (527 ft ²)
Private veranda	No
Personal bar	Yes
Personal coffee station	Yes
Air conditioning / heating	No
Overhead fans	Yes
Mosquito nets	Yes
Bath	Yes
Shower	Yes
Separate WC	Yes
Telephone	Yes
Hairdryer	Yes
Internet access	Yes
In-room safe	Yes
Plug type	UK, with USB and USB-C adaptors All rooms have international adaptors
Triple bed option	Yes, 1 Triple Suite using a single bed configuration
Twin bed option	Yes, separate bases
Double bed option	Yes
Wheelchair accessibility	No



Typical Suite layout

Accommodation comparison

	MASTER SUITE	SUITE
Number of rooms	1	4
Room size	84 m ² (904 ft ²)	49 m ² (527 ft ²)
Room configuration	Main bedroom with a private lounge on the other side of the fireplace Bathroom behind the bedroom, with a separate WC	Each suite has a slightly different layout, all with a bedroom, separate bathroom, and private WC
Private veranda	Yes	Yes
Private plunge pool	No	No
Personal bar	Yes	Yes
Personal coffee station	Yes	Yes
Air conditioning / heating	Yes	No
Overhead fans	Yes	Yes
Mosquito nets	Yes	Yes
Bath	Yes	Yes
Indoor shower	Yes	Yes
Outdoor shower	No	No
Separate WC	Yes	Yes
Telephone	Yes	Yes
Hairdryer	Yes	Yes
Internet access	Yes	Yes
In-room safe	Yes	Yes
Plug type	UK, with USB and USB-C adaptors All rooms have international adaptors	UK, with USB and USB-C adaptors All rooms have international adaptors
Triple bed option	Yes (1 room only)	Yes (1 room only)
Twin bed option	No	Yes
Double bed option	Yes	Yes
Wheelchair accessibility	No	No



DISCOVER SUYIAN CONSERVANCY

Adventures of a lifetime

Suyian offers a unique safari journey where conservation in action is woven into an immersive African bush experience.

DISCOVER SUYIAN CONSERVANCY
Adventures of a Lifetime

Experiences and highlights

Create your very own tailormade wildlife adventure, ensuring a truly incomparable, interpretive wilderness experience.



1

TWICE-DAILY GAME DRIVES

Suyian is not only home to some of Africa's most iconic species, but also presents the opportunity to encounter rarely seen and unique Laikipia wildlife 'specials', such as the Beisa oryx, striped hyena, Laikipia hartebeest, desert warthog and black (melanistic) leopard. Enjoy exclusive twice-daily game drives during which our renowned &Beyond guides will interpret the surroundings, providing guests with an intimate insight into the region.



2

GUIDED NATURE WALKS

Step out of your safari vehicle and experience nature up close on a guided walk through the Suyian Conservancy. Immerse yourself in the remarkable sights and sounds of the region as you discover the conservancy's hidden treasures: elusive creatures, intricate animal tracks, and unique plant life. Or simply relax and take in the breathtaking views from a rocky outcrop, keeping an eye out for the majestic Verreaux's eagle or the playful fan-tailed raven.



3

HORSEBACK RIDING SAFARIS

Accompanied by an expert guide, set out on horseback to uncover the region's hidden gems. Ride across the plateau gaining a unique perspective that allows for intimate encounters with some of Suyian's most iconic species.

Experience required for horseback riding

To be pre-booked at the lodge



4

YOGA SESSIONS

Unwind with daily yoga classes tailored to individual or group preferences. For a more immersive experience, join a sunrise, sunset or full moon session on a natural rock platform nestled among the nearby kopjes.

Scheduled and private sessions available*



5

WELLNESS TREATMENTS

A thoughtful selection of spa therapies and holistic practices draws on natural ingredients and age-old techniques. From deep tissue massage to mindful moments overlooking the plains, each treatment is designed to restore and reconnect.

All experiences are subject to availability

**These experiences are available at an additional cost*

Experiences and highlights



6

CATCH-AND-RELEASE FISHING

Indulge in the thrill of catch-and-release fishing along the Ewaso Narok River or cast your line at the numerous waterholes scattered around the conservancy. For the truly intrepid, a full-day expedition to the legendary Lake Turkana* awaits, promising an unforgettable angling adventure.

Lake Turkana fishing adventure to be booked in advance



7

HELICOPTER FLIGHTS*

A scenic helicopter flight not only provides aerial views of the region's most diverse landscapes, such as Suguta Valley, Ololokwe, and Mt Kenya, but also offers unrivalled access to hidden gems that are both ecologically and culturally significant.



8

ACTIVE RANCHING

What was once an area of huge livestock ranches, today Suyian combines rapidly evolving conservation practices with community development, creating a safe space for people and wildlife to coexist. Spend the morning with Suyian's herders and your guide, walking the cattle on rotational grazing rounds. There are approximately 2 500 to 3 000 cattle that form part of this unique biodiverse ecosystem.



9

LOCAL COMMUNITY VISITS

Visit Suyian Conservancy Headquarters to learn about ongoing research, wildlife protection and land restoration efforts, followed by time in a neighbouring community to see how Suyian supports local livelihoods. Or take part in a cultural visit to a nearby pastoral tribe, where ancient traditions still thrive alongside the wild.



10

CAMEL EXPERIENCE

Meet local herdsman at the camel camp or walk alongside the camels, observing their slow, steady rhythm as they press their padded feet softly into the ground. You may even assist with milking the camels. In this intimate moment, you'll witness the profound connection between humans and animals, forged over generations of nomadic tradition.

DISCOVER SUYIAN CONSERVANCY
Adventures of a Lifetime

Seasonal highlights

Suyian is an exceptional year-round destination, offering unforgettable attractions and experiences every season.

YEAR-ROUND ACTIVITIES

- | | |
|-----------------------------|------------------------------|
| ✓ Twice-daily game drives | ✓ Catch-and-release fishing |
| ✓ Night game drives | ✓ Scenic helicopter flights* |
| ✓ Active ranching* | ✓ Wellness treatments |
| ✓ Camel experience* | ✓ Yoga (group and private) |
| ✓ Horseback riding safaris* | ✓ WILDchild experiences |
| ✓ Local community visits | ✓ Guided nature walks* |

All experiences are subject to availability

**These activities are weather dependent*

CHILD POLICY

Camel experience	16 years and older
Horseback riding safaris	16 years and older
Guided nature walks	16 years and older
Active ranching	16 years and older



DISCOVER SUYIAN CONSERVANCY
Adventures of a Lifetime

A day in the life

OF A GUEST

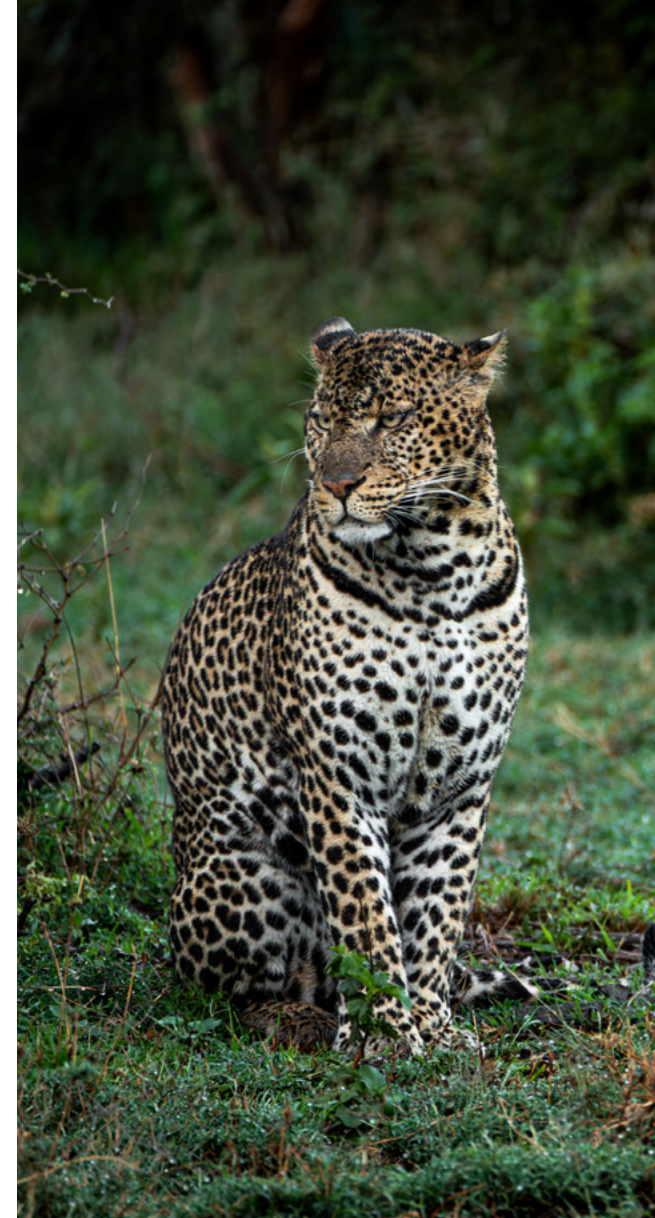
From the moment you wake up, your &Beyond experience is tailored to your interests and needs. Your butler and guide will discuss the day with you, including timings and experiences, ensuring your day is as extraordinary as the location you are visiting. Here is what to expect in a day on safari in Kenya.

TIMING

EXPERIENCE

Early morning	Wake-up call from your butler, with a pre-ordered fresh juice or early-morning tea or coffee
Early morning	Get ready for the day by enjoying a range of early morning activities, from safari game drives and horseback riding safaris to camel experiences and active ranching tours
Morning to mid-morning	Return to the lodge for a delicious breakfast served in the guest area or in the privacy of your suite
Mid-morning to midday	Spend your morning at leisure, or choose between a guided nature walk and a scenic helicopter flight
Midday to mid-afternoon	Savour lunch at your convenience either on the lodge deck or by the pool
Mid-afternoon	Head out on a local community visit, or enjoy a gentle yoga class, wellness treatment or gym session
Mid-afternoon to late afternoon	Indulge in afternoon tea, sipping on chai brewed over the Aga stove in the lodge's house kitchen, accompanied by a curated selection of sweet and savoury delights
Late afternoon	Explore the conservancy on an afternoon to evening safari game drive* <i>*Afternoon game drives can easily be extended into an exciting night game drive – please keep in mind all guests must be back at the lodge no later than 21h00</i>
Evening	Reminisce about the day over dinner, served in the guest area, by the lodge pool or in the house kitchen

*Timings and guest experiences are guidelines only
Some experiences are at an additional cost and weather dependent*





5 BEYOND



#seewhatliesbeyond

andBeyond.com