



DISCOVER

Masai Mara



Blessed with an astounding year-round concentration of wildlife and a site of the Great Wildebeest Migration, Kenya's Masai Mara National Reserve provides an unsurpassed safari experience.

Why visit the Masai Mara?

The quintessential safari destination, the Masai Mara is a land of breathtaking vistas, abundant wildlife and endless landscapes and adventures.



1

DIVERSE EXPERIENCES

The Masai Mara offers an array of adventure opportunities. Take advantage of staying on a private concession and enjoy bush walks, dinners under the stars, or a hot air balloon safari. With an abundance of wildlife and over 500 bird species, the game drives are a naturalist and photographers paradise.



2

AN ABUNDANCE OF WILDLIFE

Blessed with an astounding year-round concentration of animals, the Masai Mara National Reserve provides an unsurpassed wildlife experience. Roaming the terrain is an abundance of the Big Five, big herds of elephant and resident lion prides, as well as elusive leopard, endangered black rhino, giraffe and cheetah. The Mara River is home to large rafts of hippo and some of Africa's largest crocodiles.



3

MEET THE MAASAI PEOPLE

Traditionally a semi-nomadic tribe, the Maasai are recognised worldwide for their unique cultural dance, colourful clothing and intricate handcrafts. Seen as distinguished warriors, they still follow many traditions and rituals. This glimpse of authentic Maasai culture is a fascinating experience.



4

AMIDST THE GREAT MIGRATION

One of nature's biggest wildlife spectacles, the wildebeest migration passes through the Masai Mara from July to October. Watch in awe as the migration criss-cross back and forth across the Mara River in the Masai Mara. Our game drives are carefully planned to anticipate the progress of the Great Migration and our guides make every effort to explain the movement of the herds and get sightings of the dramatic river crossings.

Why travel with &Beyond?

1 TRAVEL WITH HEART

Our core ethos of "Care of Land, Wildlife & People" drives all that we do. When you travel with us, you make a meaningful contribution to the preservation of our world's cultures and wildlife, and leave having had an opportunity to gain first-hand experience of some of our conservation and community initiatives.

2 IN OUR HANDS

We are on call 24/7 to assist you throughout your journey. With over 2 000 &Beyonders, including guides and ground logistics teams on three continents, you will be in our hands from the moment you arrive to the moment you leave. Additionally, we offer a personal concierge service that is only a phone call away should you require any assistance at any point during your trip.

3 FINEST GUIDES

We operate three ranger training schools and are renowned for having the most highly trained, professional and knowledgeable guides, rangers, naturalists and trackers, who offer intriguing cultural insights as well as interpretive wildlife experiences.

4 TRAVEL EXPERTS

Big or small, we are all about tailoring trips around your specific interests and expectations. Our expert travel specialists are able to personalise a range of experiences for individual travellers, groups, families, wedding parties and special interest groups.

5 PERFECT MOMENTS

With journeys lovingly crafted from perfect moments, you will return from an &Beyond adventure feeling that nothing will take your breath away quite like this ever again. Our collection of signature experiences is often exclusive to &Beyond, ensuring a unique adventure.



Wow! It so far exceeded my expectations that I am speechless. Every day was a new discovery.



&BEYOND GUEST

DISCOVER MASAI MARA

Travel Kenya and beyond

Visiting East Africa and travelling across this vast landscape requires much thought and attention. Contact your preferred travel specialist to assist with your travel plans.

GETTING TO THE MASAI MARA

There are scheduled flights twice-daily on light aircraft from Nairobi's Wilson Airport to Kichwa Tembo's private airstrip

Mombasa Air operates daily flights (approximately two hours) from Mombasa to Nairobi

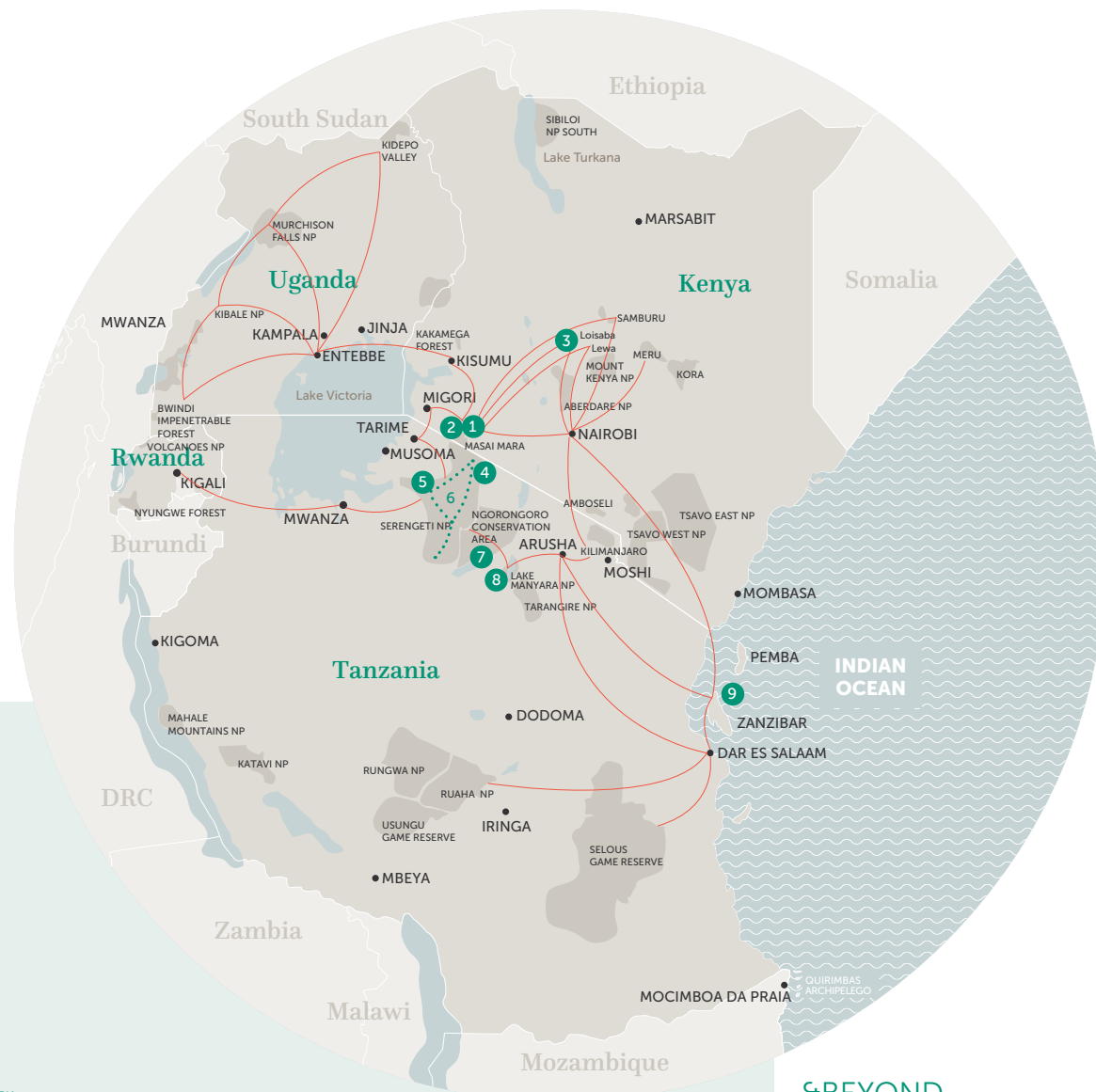
Flights connect from the Masai Mara to Entebbe via Kisumu

Flights connect from the Masai Mara to the Serengeti and Kigali via the Migori / Tarime border

The Masai Mara is accessible by road from Nairobi with 4x4 vehicle. Road transfer times dependant on traffic

TRAVEL TIMES

NAIROBI							
✈️ 35mins 3hrs 45mins	AMBOSELI						
✈️ 1hr 30mins 6hrs	2hrs 35mins Not advised	SAMBURU NP					
✈️ 35mins 3hrs 30mins	1hr 10mins Not advised	35mins 4hrs 30mins	LAIKIPIA				
✈️ 55mins 5hrs	2hrs 55mins Not advised	30mins 3hrs 30mins	45mins 3hrs	MERU			
✈️ 1hr 15mins 5hrs 30mins	3hrs 35mins Not advised	1hr 30mins Not advised	1hr 10mins Not advised	3hrs 5mins Not advised	MASAI MARA		
✈️ 30mins 3hrs	3hrs 45mins 35mins	1hr 10mins 7hrs	40mins 3hrs 30mins	1hr 20mins 5hrs 30mins	3hrs 35mins 7hrs	RIFT VALLEY	
✈️ 1hr 10mins Not advised	5hrs 30mins Not advised	5hrs Not advised	5hrs Not advised	5hrs 30mins Not advised	2hrs 35mins Not advised	5hrs Not advised	KENYAN COAST



&BEYOND LODGES

KENYA

- 1 Bateleur Camp
- 2 Kichwa Tembo Tented Camp
- 3 Suyian Lodge

TANZANIA

- 4 Klein's Camp
- 5 Grumeti Serengeti River Lodge
- 6 Serengeti Under Canvas
- 7 Ngorongoro Crater Lodge
- 8 Lake Manyara Tree Lodge
- 9 Mnemba Island

DISCOVER MASAI MARA

Great Wildebeest Migration

1 ONE OF THE 7 NATURAL WONDERS OF THE WORLD

Considered the most thrilling spectacle in the animal kingdom, this epic journey migrates from Tanzania's Serengeti to Kenya's Masai Mara.

2 THE WORLD'S LARGEST OVERLAND MAMMAL MIGRATION

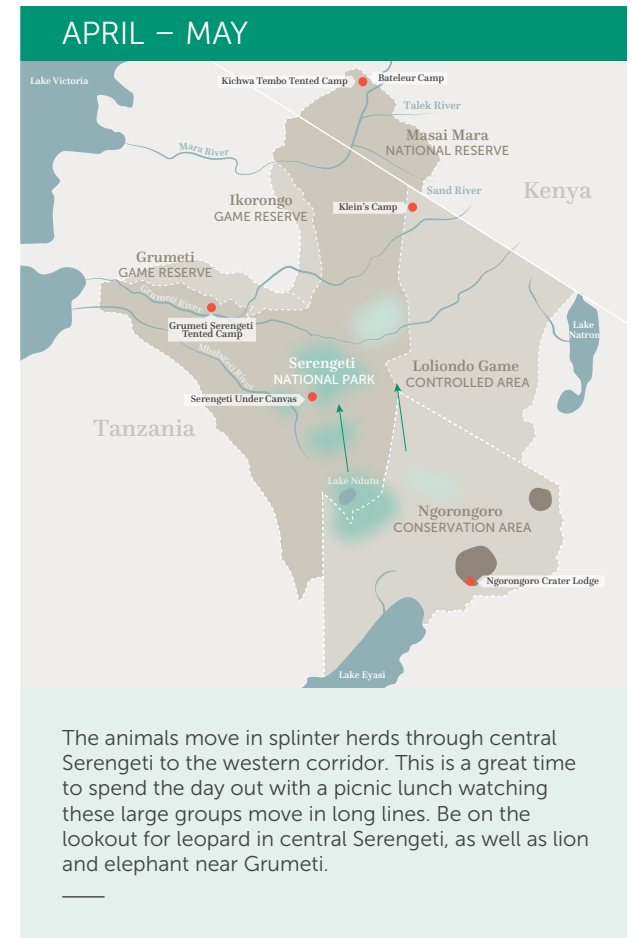
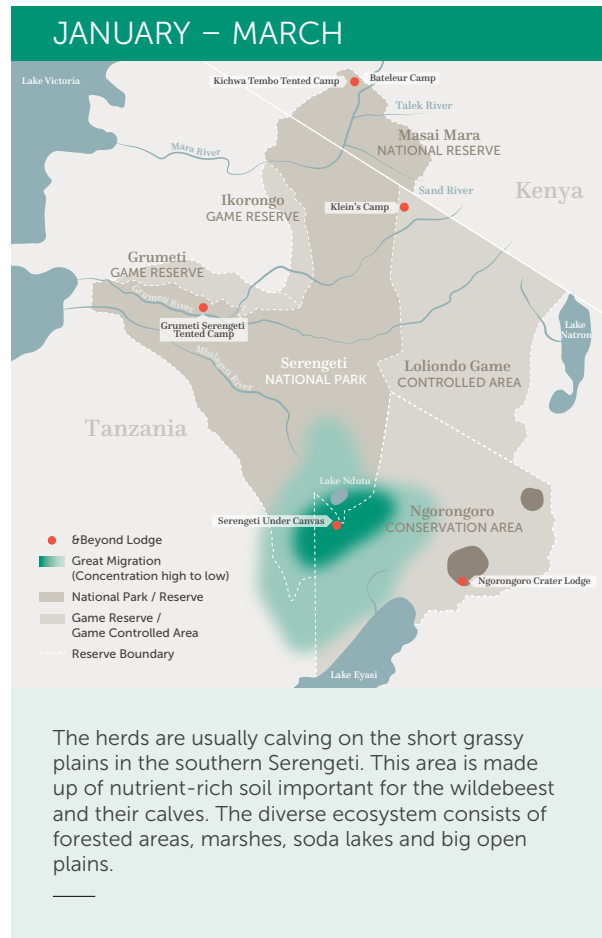
The annual movement of wildebeest and other herbivores across the Serengeti-Mara ecosystem consists of more than 1.5 million wildebeest, 500 000 zebra, 200 000 Thompson's gazelle and 18 000 eland.

3 THE ANIMALS MIGRATE OVER 800 KM (500 MI)

Due to the sheer size of the herd, the animals have to move to be able to survive. The herds generally follow the rain, as where there is rain, there is fresh grass. Once grass is depleted in one area, they will move on to a grassy area.

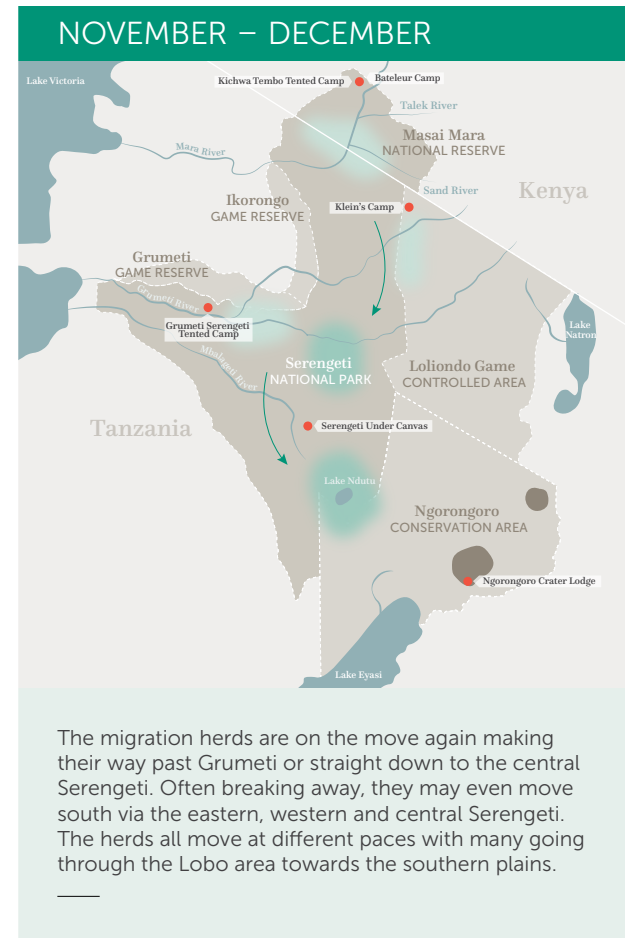
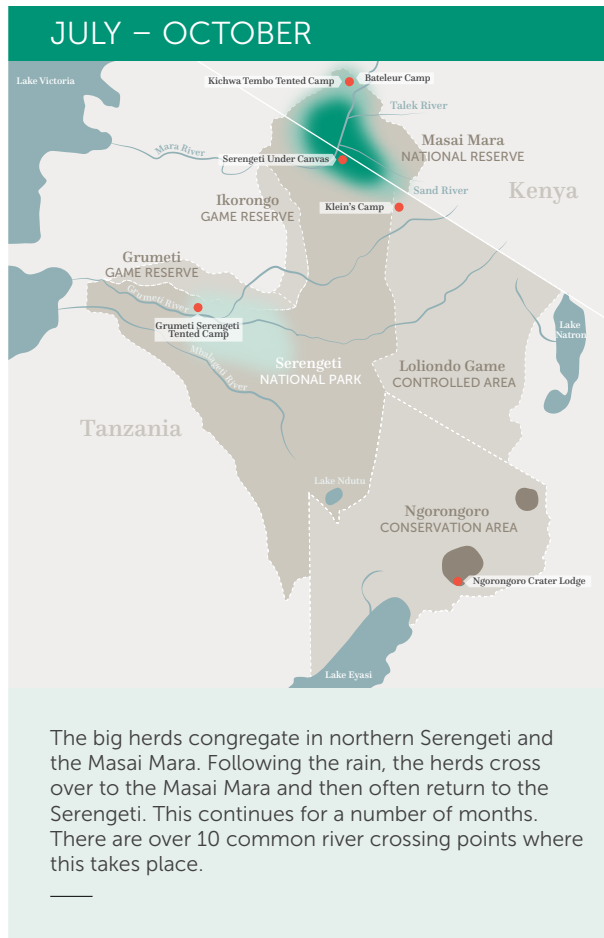
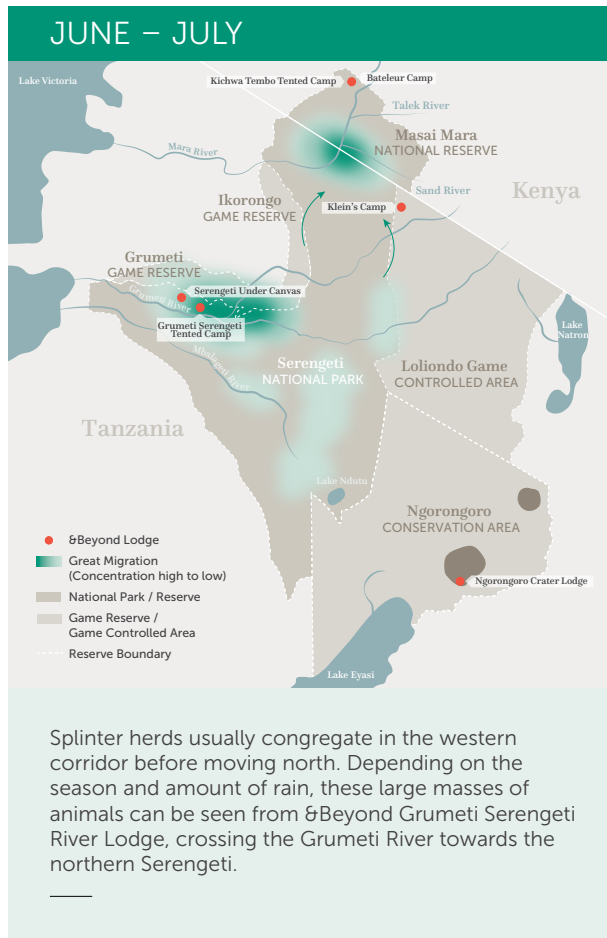
It's estimated 500 000 wildebeest calves are born annually.

The annual movement of wildebeest and other herbivores across the Serengeti-Mara ecosystem is rarely the same in terms of precise timing and direction.



(continues on next page)

Great Wildebeest Migration (cont.)



DISCOVER MASAI MARA

Explore Masai Mara

- Beyond Lodges
- River
- Murram graded road
- Graded track
- Border
- ▲ Hills
- Beyond Kichwa Tembo Concession
- ✈ Airstrip
- Ⓜ Gate
- 📍 Point of interest
- 🌿 Migration river crossing
- 👁 Scenic viewpoints
- 🎈 Hot air balloon safaris
- 👣 Hike / Walk
- 🏠 Community and cultural visit
- Salt lick

VEGETATION ZONES

- Dense woodland
- Open woodland
- Savanna
- Grassland
- Swamp



DISCOVER MASAI MARA

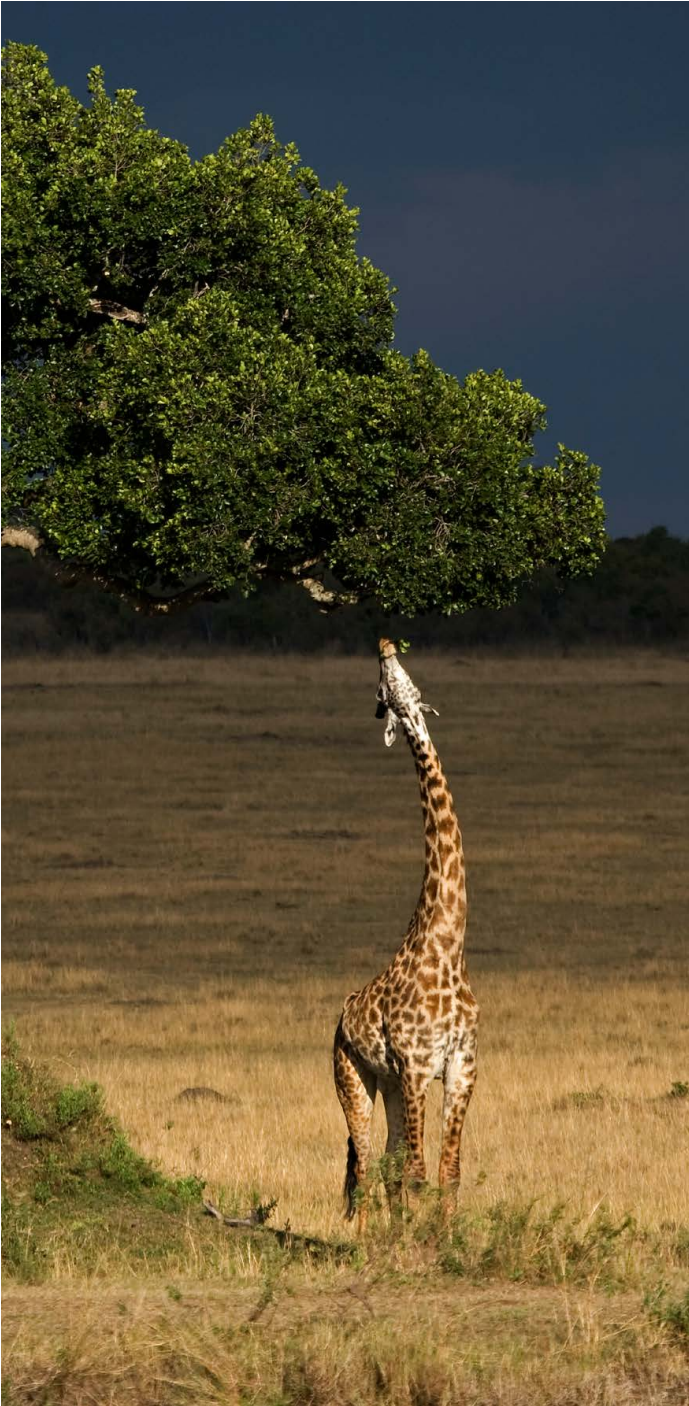
Regional information

&BEYOND BATELEUR CAMP & KICHWA TEMBO TENTED CAMP

Altitude	1 634 m (5 360 ft)
Malaria area	The camps are situated in a low-risk malaria area
Airstrip / Helipad	01°16'S and 35°02'E
GPS coordinates	01°14.546'S and 35°46.490'E
Best time to travel	Year-round
Weather	The Masai Mara experiences warm to hot summers from December to March and cool winters from July to September. Night-time temperatures can be cold throughout the year due to the altitude
Rainfall	Rain is generally expected from mid-March to May and again in November to early January
Temperature averages	Summer: 28°C / 80°F to 2°C / 92°F Winter: 12°C / 52°F to 24°C / 75°F

The staff took great care of everyone in the camp. The food was amazing, our driver was spectacular, and there were animals everywhere.

&BEYOND GUEST





BEYOND

DISCOVER MASAI MARA

Adventures of a lifetime

Classic safari experiences set against a backdrop of expansive landscapes, year-round wildlife theatre, Great Migration drama and the traditional world of the Maasai that is woven into these wild spaces.

DISCOVER MASAI MARA
Adventures of a Lifetime

Experiences and highlights



1

SAFARI GAME DRIVES

Spectacular landscapes filled with an abundance of wildlife make for unforgettable game drives in the Masai Mara is the quintessential African safari experience, with customised, open vehicles where guests can expect to encounter large numbers of plains game and spectacular predator interaction year-round.



2

HOT AIR BALLOON SAFARI

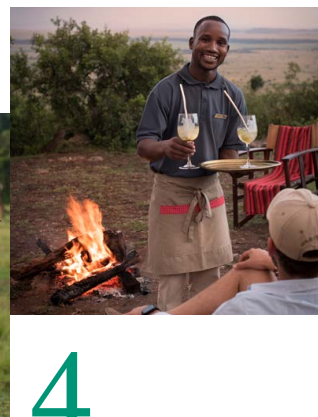
Guests will have a bird's-eye view of the Masai Mara National Reserve as they take to the dawn skies on a hot air balloon safari and float soundlessly over the boundless plains. The flight is about an hour and once landed, champagne and a full English bush breakfast in true *Out of Africa* style awaits.



3

BUSH WALKS

For those guests looking for fresh and thrilling on-the-ground views, this privately-guided activity offers the perfect opportunity to discover a multitude of natural wonders: following wildlife trails, discovering the complexities of tracking and learning to interpret the signs and sounds of the bush. Courtesy-use SWAROVSKI OPTIK binoculars will be an indispensable bonus.



4

BUSH DINING

Revel in the landscapes of Africa as you savour a meal served just like African explorers of old. Enjoy an open-air breakfast or al fresco dinner. Your every whim is taken care of, and your table set up in the wilds of Africa will make for an unforgettable dining experience.



5

MAASAI VILLAGE VISIT

Immerse yourself in authentic Maasai culture with a visit to a traditional village. Witness the daily rituals of these semi-nomadic and pastoralist people and their hustle and bustle in local life. Browse through the Maasai Craft Centre and purchase artefacts made by those you have encountered. All proceeds from this go directly to the community.

OTHER ACTIVITIES

MAASAI BLESSINGS OR CELEBRATIONS

A unique and special place to celebrate significant moments in life. We welcome guests that would like to revel in weddings, blessings and engagements

COMMUNITY VISIT

A community visit provides a first-hand experience of the projects Wild Impact (formerly Africa Foundation), our long-standing community and conservation development partner, is facilitating and supporting to enable future leaders, healthy ecosystems, future foundations and thriving communities

WELLNESS TREATMENTS OVERLOOKING THE PLAINS

After a safari-filled day, indulge in the pleasures of a Healing Earth wellness treatment at the Bateleur massage sala, the Kichwa massage tent or in the privacy of the guest room

Activities may incur an additional charge depending on which lodge you are staying at

DISCOVER MASAI MARA
Adventures of a Lifetime

Seasonal highlights

YEAR-ROUND ACTIVITIES

✓ Safari game drives	✓ Sundowners	✓ Maasai village visit
✓ Big Five sightings	✓ Picnic in the African bush	✓ Maasai blessing or celebrations
✓ Birdwatching	✓ Bush dining*	✓ Wild Impact community visit
✓ Bush walks*	✓ Healing Earth wellness treatment	
✓ Hot air balloon safari	✓ Maasai performance	

*Weather dependent

TIMING IS EVERYTHING

	JAN	FEB	MAR	APR	MAY	JUN	JUL	AUG	SEP	OCT	NOV	DEC
Big Five game viewing	✓	✓	✓	✓	✓	✓	✓	✓	✓	✓	✓	✓
Bush walks	✓	✓	✓	✗	✗	✓	✓	✓	✓	✓	✗	✓
To view the Great Migration crossing over the Mara River between the Masai Mara and Serengeti	✗	✗	✗	✗	✗	✗	✓	✓	✓	✓	✗	✗
Maasai boma visit	✓	✓	✓	✓	✓	✓	✓	✓	✓	✓	✓	✓
Hot air balloon safari	✓	✓	✓	✓	✓	✓	✓	✓	✓	✓	✓	✓
To enjoy a less crowded Masai Mara, with good rates in low season	✗	✗	✓	✓	✓	✗	✗	✗	✗	✗	✓	✓
SEASONAL RATES**	\$\$\$/\$\$	\$\$	\$\$	\$	\$	\$/\$\$\$	\$\$\$	\$\$\$	\$\$\$	\$\$\$	\$\$	\$\$/\$\$\$

** The \$ / \$\$ / \$\$\$ references are used to indicate rate variation and are not associated with specific values



DISCOVER MASAI MARA
Adventures of a Lifetime

A day in the life

OF A GUEST

From the moment you wake up, your &Beyond experience is tailored to your interests and needs. Your butler and/or guide will discuss the day with you, including times and experiences, to ensure your day is as extraordinary as the location you are visiting. Here’s what to expect on a typical day on safari in the Masai Mara National Reserve.

TIMING

EXPERIENCE

Early morning	Early wake-up call with a hot cup of tea or coffee in your tent or at the main guest area/bar
Early morning to afternoon	<p>Depending on what you’d prefer and if the Great Migration is in season and in the area, there are a few game drive options available:</p> <ul style="list-style-type: none">• Go on an early-morning game drive with a tea and coffee stop, returning to the camp for breakfast and lunch. Enjoy the rest of your day at leisure, indulging in a wellness treatment or taking part in an optional lodge activity. Savour High Tea at the camp before heading out for an optional afternoon experience and/or game drive• Go on a morning game drive with either a tea and coffee stop or a pre-packed picnic bush breakfast, before returning to the camp for lunch. Enjoy the rest of your day at leisure, indulging in a wellness treatment or taking part in an optional lodge activity. Savour High Tea at the camp before heading out for an optional afternoon experience and/or game drive• When the Great Migration is in season and in the area, enjoy breakfast at the camp before heading out on a full-day game drive with a pre-packed picnic bush lunch. Return to the camp for dinner <p><i>Your guide will discuss your day with you the night before, confirming all available experiences beforehand. Please note, for added flexibility, a private vehicle must be booked in advanced at an additional cost</i></p>
Early morning to mid-morning (optional)	Be picked up from the camp for a balloon safari, following by a bush breakfast and shortened game drive on the way back to the camp
Optional activities	<p>Go on a local Maasai village visit or spend time with the Impact Team learning about the Nyakweri Forest and our other Wild Impact initiatives</p> <p><i>These experiences need to be selected as per your game drive schedule</i></p>
Evening	<p>Sip on your favourite pre-dinner drink of choice before enjoying dinner at the camp</p> <p><i>A Maasai dancing ceremony takes place every other night at the camp</i></p>

Timings and guest experiences are guidelines only.
All experiences are subject to availability and weather dependent. Some experiences are at an additional cost.





DISCOVER MASAI MARA

Lodge overview

Our two camps offer a variety of accommodation, from contemporary Superior Tents at Kichwa Tembo to the exclusive Luxury Tents of Bateleur, with tailor-made personalised service in a private concession.

DISCOVER MASAI MARA

Accommodation Overview

Our camps in the Masai Mara

Covering an area of 1 510 km² (583 mi²), the Masai Mara is a land of breathtaking vistas, abundant wildlife and endless landscapes.

Meaning 'head of the elephant' in Kiswahili, the Kichwa Tembo concession in the Mara Triangle consists of private land leased from Maasai landlords. In addition to the excellent year-round concentration of wildlife, the concession lies directly in the path of Africa's spectacular Great Migration.

Our two camps offer a variety of accommodation, from contemporary Superior Tents in the forest to Luxury Tents offering an additional level of amenities and personalised service.

&BEYOND BATELEUR CAMP

Situated below the scenic location where the famous final scene of the movie *Out of Africa* was filmed, this romantic and totally private camp reflects the ambiance of Kenyan safaris of the '20s and '30s. The epitome of tented luxury, &Beyond Bateleur Camp comprises just two intimate camps of nine Luxury Tents each, set among the forests on the edge of the Masai Mara.

&BEYOND KICHWA TEMBO TENTED CAMP

Steeped in the aura of classical safari, &Beyond Kichwa Tembo Tented Camp boasts 26 Superior Tents and eight Superior View Tents. While the Superior Tents look out onto the open grasslands or the shady forest surrounding the Saparango River, the Superior View Tents boast exceptionally beautiful, uninterrupted views of the Masai Mara. Celebrating the romance and nostalgia of the Mara, this is a camp with a warm family feeling, where Kenyan hospitality abounds.

PERSONALISED SERVICE AT BATELEUR CAMP



SUPERIOR VIEW TENT AT KICHWA TEMBO

IMPACT INITIATIVES

&Beyond Bateleur Camp has received a **gold eco-rating status** from Eco-Tourism Kenya

We collaborate closely with **Wild Impact** (formerly Africa Foundation), our long-standing community and conservation development partner, on a range of initiatives and programmes:

Over USD 420 000 invested since 2006 into education and healthcare in neighbouring communities

Community Leaders Education Fund:

11 tertiary level students supported through bursaries in the Masai Mara.

We are creating **conservation awareness** through education where over 203 children and adults partake annually

98% of the employees at the lodge are Kenyan and 50% are from local communities

64% of goods are procured from communities around the Masai Mara

By **bottling water on site** and using **glass bottles**, &Beyond Bateleur Camp with &Beyond Kichwa Tembo Tented Camp save approximately 56 000 bottles from going in to land fill sites annually

We are a part of the **Lionscape Coalition**, which supports lion conservation efforts through the Lion Recovery Fund.

All plastic, glass, and materials such as old engine oil are sent away for **re-use and recycling**

Energy use is tracked and reported on a monthly basis. This includes the use of wood, petrol, diesel, electricity, gas, paraffin and charcoal

We take steps to **conserve water**, including monitoring usage closely

Our tented camps



1

BATELEUR CAMP

Luxury Tent: 87 m² (936 ft²)

Luxury Family Tent: 185 m² (1 991 ft²)

The epitome of tented luxury, Beyond Bateleur Camp comprises just two intimate camps of nine Luxury Tents including one Luxury Family Tent, set with magnificent views out on to the plains of the Masai Mara. With private butler service and four-seater vehicles, a massage sala and gym, this is a personalised and exclusive experience brimming with Kenyan hospitality and delight. Classical elegance defines our tents, with polished wooden floors and ensuite bathrooms comprising both indoor and outdoor showers and a 'star bath' with sky views. Each tent overlooks the plains of the Masai Mara, together with the convenience of a personal bar and coffee station.



2

KICHWA TEMBO

Superior View: 52 m² (560 ft²)

Superior Tent: 52 m² (560 ft²)

Superior Family Tent: 115 m² (1 238 ft²)

Steeped in the aura of classical safari, this 34-tent camp showcases a simple yet contemporary style, perfect for families, groups and couples who enjoy a livelier atmosphere. A double-storey bar and lounge area feature spectacular panoramas. Made up of eight Superior View and 20 Superior Tents, including three Superior Family Tents, each tent features beautiful Maasai inspired interiors that showcase use of local materials. Oversized beds are perfectly positioned to make the most of the views, while natural toned furniture combine with tribal decorative elements, making for an authentic display of the culture.

DISCOVER MASAI MARA

&Beyond Bateleur Camp

A classic and intimate safari experience in a private corner of the Masai Mara, with timeless views across Africa's great plains, intrepid adventure, wildlife magic and authentic community interactions.



&BEYOND



DISCOVER MASAI MARA
& Beyond Bateleur Camp

Why stay?

1 BREATHTAKING VIEWS OVER THE MASAI MARA

Timeless views across the boundless plains of the Masai Mara; known to the Maasai as the 'spotted' land, the savanna landscape that unfolds in front of the camp is dotted with acacia trees – a definitive feature of this region. With unbroken views over the grassy plains, guests can while-away their afternoon on the private deck of their tent, or alongside the camp swimming pool. Alternatively, take advantage of a wellness treatment or sip on a delicious cocktail at our G&T bar.

2 BUCKET LIST EXPERIENCES ON A PRIVATE CONCESSION

At Bateleur Camp, we take full advantage of the private concession and guest experiences are designed to fully embrace the variety of opportunities this brings. Delight in delicious hearty breakfasts in the wild, chilled sundowners in the vast expanse and bush dinners under star-studded skies. Join fascinating bush walks or embark on a safari game drive to experience the abundance of wildlife just beyond the camp.

3 A ROMANTIC AND INTIMATE BUSH CAMP

This exclusive camp reflects the ambiance of Kenyan safaris of the '20s and '30s and is situated below the scenic location where the famous final scene of the movie *Out of Africa* was filmed. The epitome of tented luxury, Bateleur Camp is set among the forests on the edge of the Masai Mara. Warm and welcoming with effortless sophistication, the nine Luxury Tents in each camp, including one adjoining Luxury Family Tent, is ideal for family and multigenerational travel. From the complimentary use of SWAROVSKI OPTIK binoculars to the absolute delight of our safari theatre, offering frothy cappuccinos and colourful cocktails on game drives, at Bateleur Camp, local Kenyan hospitality and personalised, thoughtful service abounds. The guests experience is tailored to the needs and wants of the guest and discussed with the guide and camp manager daily.



This is a must place to stay. From the beautifully appointed accommodation, to excellent game drives and superb food, why would you go anywhere else?



Camp amenities



1

CAMP INFINITY POOLS

Each camp has its own swimming pool, to be enjoyed by the guests. The two pools have magnificent views over the plains, and offer the perfect place not only to refresh, but to enjoy meals.



2

FROM DAY TO NIGHT

Guests staying at both Bateleur South and North camps can enjoy the bar area. A 'coffee bar' by day and 'gin bar' by night', it features a selection of Kenyan coffees and creative cocktails. Perhaps the most popular feature is the craft gin bar, which stocks 16 different craft gins, each with its own story.



3

MASSAGE SALA

Guests are able to enjoy relaxing Healing Earth wellness and spa treatments in the intimate massage sala. Boasting the same incredible view, there are two massage tables that allow for both couple and individual treatments.



4

SAFARI SHOP

The camps share a compact &Beyond Safari Shop, which is a celebration of Kenyan high-end fashion, jewellery and accessories. Look forward to an exclusive collection of local designers, which includes Anna Trzebinski, Penny Winter and Antassia.



5

GYM

Next to the South Camp pool is a well-equipped, state-of-the-art exercise room, complete with treadmill, elliptical, stationary bicycle, yoga ball and weights. Guests can work out with a view of giraffe, a herd of buffalo, plenty of warthog and often elephant walking out on the plains.

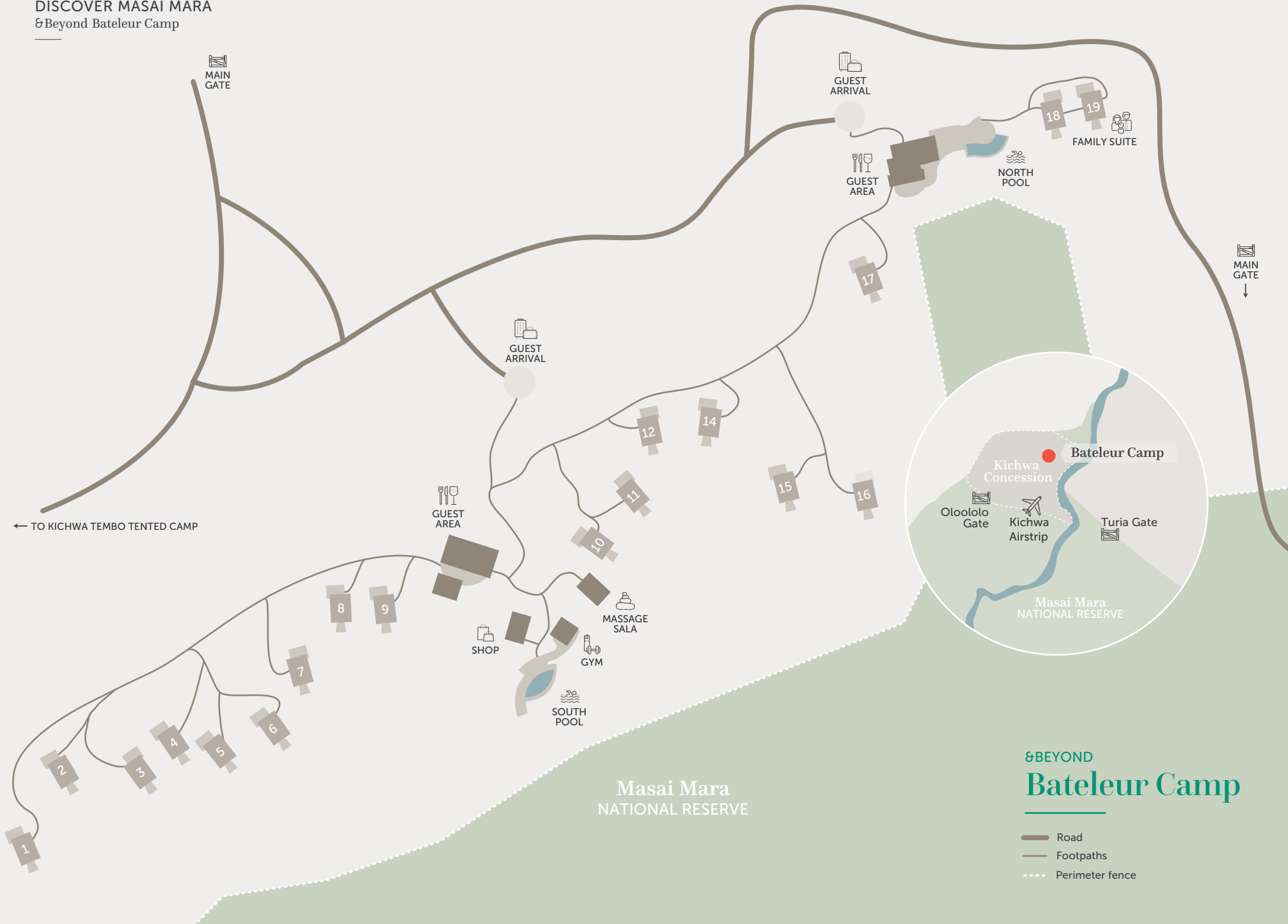


6

DINING LOCATIONS

Enjoy your meals in a variety of al fresco locations such as the outdoor boma area at the South Camp, the extended deck at North Camp, the swimming pools or the privacy of your room. Tuck into a delectable array of fresh produce, much of which is from our organic vegetable garden.

DISCOVER MASAI MARA
& Beyond Bateleur Camp



8BEYOND
Bateleur Camp

- Road
- Footpaths
- Perimeter fence

DISCOVER MASAI MARA
& Beyond Bateleur Camp

Camp overview

CAMP

Maximum number of guests	36 (18 in each camp)
Number of rooms	18 (9 in each camp)
Family accommodation	1 Family Tent (2 tents with interleading passage)
Pilot / Guide accommodation	Available
Room type	Luxury Tent
Distance between rooms	10 m (33 ft)
Check-in / Check-out times	14h00 / 10h00

DINING

Food / Dietary options	Kosher not available. Halaal and other special dietary requests available: please book in advance
Private butler service	Yes
Plated service	Yes
Private dining	Yes

PAYMENT TYPES ACCEPTED

Credit cards accepted	Mastercard and Visa
Currency	USD are widely used, however, notes dated prior to 2006 are not accepted

FACILITIES

Power	24-hour power
Internet access	Yes, Wi-Fi throughout
Wine store or cellar	No
Boma	Yes, in South Camp
Bar	Yes, a gin and coffee bar
Interactive kitchen	Yes, for breakfast only
Swimming pool	Yes, each camp has a pool (not heated)
Wellness offering	Healing Earth wellness treatments offered in-room or in the massage sala
Fitness	Well-equipped gym and gym-in-a-basket in each room (available on request)
Conference facilities	No
Weddings and blessings	Can be organised on request - please speak to your travel specialist
Wheelchair accessibility	Possible with assistance in certain cases
Complimentary laundry service	Yes
&Beyond Safari Shop	Yes

OTHER

Vehicle type	4-seater and 6-seater semi-open safari vehicles
Private 4x4 safari vehicle	Depending on availability and at an additional cost
Activity Inclusion	All &Beyond lodge and safari activities included

DISCOVER MASAI MARA
&Beyond Bateleur Camp

Inclusions

RATE INCLUDES

Accommodation	✓
Three meals daily	✓
Soft drinks, house wines, local brand spirit and beers, teas and coffees	✓
Refreshments on safari game drives	✓
Laundry	✓
One complimentary pair of SWAROVSKI OPTIK CL Companion 8x30 binoculars per tent to share during your stay	✓
Emergency medical evacuation insurance	✓
Transfers to / from the lodge airstrip	✓
WILDchild programme	✓
Twice-daily safari game drives	✓
Bush walks*	✓
Maasai performance*	✓
Bush dining*	✓
Wild Impact community visit*	✓

RATE EXCLUDES

Telephone calls	✗
Gratuities	✗
Personal items	✗
Safari Shop purchases	✗
Champagne, cognac, fine wines, premium brand spirits, and cigars	✗
National Reserve fees	✗
Hot air balloon safari	✗
Community visit to a Maasai boma	✗
Maasai dancers for private functions	✗
Healing Earth wellness treatments	✗
Weddings and blessings	✗

**These activities may incur an additional charge for groups
Some experiences are weather dependent*

The deeply personal touches at the lodge and in the bush made our stay extraordinary. ”

&BEYOND GUEST



DISCOVER MASAI MARA
&Beyond Bateleur Camp

WILDchild

Travel to Kenya is recommended for children eight years or older. Children five years and younger cannot participate in regular game drives; children aged six to 11 can participate in regular game drives at the lodge manager's discretion. Please note that, due to the lodge not fenced off, children are required to have an adult accompanying them at all times.

WILDCHILD AT BATELEUR CAMP

Children visiting the camp can take advantage of the fun-filled and interactive WILDchild programme where little ones can participate in the following:

- Join a Maasai bow and arrow competition
- Learn how to make a fire the traditional Maasai way
- Create a beautiful beaded artwork with the Maasai women
- Enjoy a range of traditional Maasai games
- Go on a forest walk with a guide, looking for birds and animal spoor and tracks
- Identify butterflies with a guide
- Play soccer with the camp's team

CHILD POLICY*

0 - 5 years	Game drives only in a private vehicle or children's game drives (avoiding lion, leopard and elephant) outside of normal game drive time on request. No walks outside of the lodge
6 - 11 years	Game drives only at discretion of lodge manager. No walks outside of the lodge
12 - 15 years	Game drives. No walks outside of the lodge
16 years and above	All activities

*A private vehicle can be booked when staying at &Beyond Bateleur Camp that allows the drives to be tailored to suit the ages of the children (subject to availability and at an additional cost)

CHILDMINDING

While we don't have trained childminders, we can offer the services of certain staff members who are wonderful with children. This will be at an additional cost.

Please note: The camp is not fenced off, and children are required to have an adult accompanying them at all times

Get your children travelling early.
Expose them to the people, the food and
the real culture of your destination. ”





BEYOND

BEYOND BATELEUR CAMP

Accommodation

A classic safari experience in a secluded corner of the Masai Mara, with two intimate camps, each home to nine luxury tents.



BEYOND KENYA

DISCOVER MASAI MARA

Beyond Bateleur Camp Accommodation

Timeless safari elegance

Slip into a world of hardwood floors, polished silver and copper bathtubs, set against the pulse of the open Mara plains.



DISCOVER MASAI MARA
Beyond Bateleur Camp Accommodation

LUXURY TENTS

9 Tents per camp / Max. 18 guests per camp

OLD-WORLD CHARM

Classical elegance defines our Luxury Tents, with beautifully handcrafted artefacts, fine antiques and Chesterfield sofas completing each tent’s tasteful interior. Ensuite bathrooms comprise both indoor and outdoor showers plus a ‘star bath’ boasting unparalleled sky views. Each tent has a large private deck with a comfortable daybed overlooking the Masai Mara, together with the convenience of a personal bar and coffee station.



ROOM FACILITIES

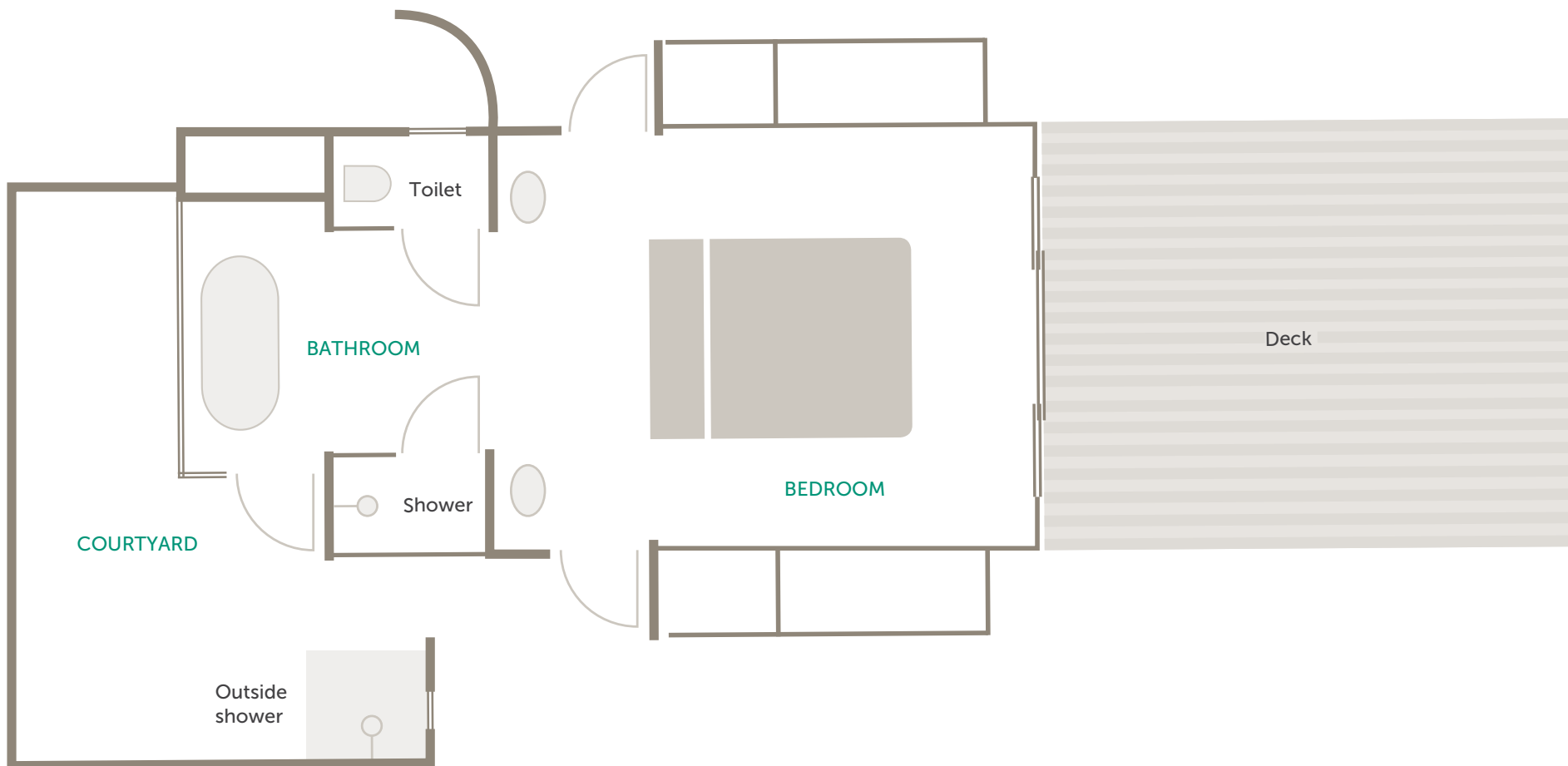
Room size (square meters)	87 m ² (936 ft ²)
Private veranda	Yes, with daybed
Personal bar	Yes
Personal coffee station	Yes
Air conditioning / heating	No
Overhead fans	Yes
Mosquito nets	No, sealed tent
Bath	Yes, iconic ‘starbath’. Weather protected with sky-views from bathtub
Shower	Indoor and outdoor showers
Seperate WC	Yes
Telephone	In-room telephones are available. Intermittent GSM mobile reception
Hairdryer	Yes
Internet access	Yes
In-room safe	Yes
Plug type	220V AC plug points in rooms Plug type: G British – BS 1363
Triple bed option	2 (children 16 years and younger)
Twin bed option	All convertible to twin or double (beds are within the same bed frame)

DISCOVER MASAI MARA

&Beyond Bateleur Camp Accommodation

LUXURY TENTS

9 Tents per camp / Max. 18 guests per camp



DISCOVER MASAI MARA

& Beyond Bateleur Camp Accommodation

LUXURY FAMILY TENT

1 interleading Family Tent / Max. 2 adults & 2 children (3 children on request)

IDEAL FOR FAMILIES

The camp lends itself to family travel in the form of two spacious Luxury Tents that make up one Luxury Family Tent. A Luxury Family Tent comprises of a twin and double room with adjoining interior passage and private guest area. Each tent has its own ensuite bathroom and a private veranda as well as seating area. The Luxury Family Tent can accommodate two adults and two children (three children on request).

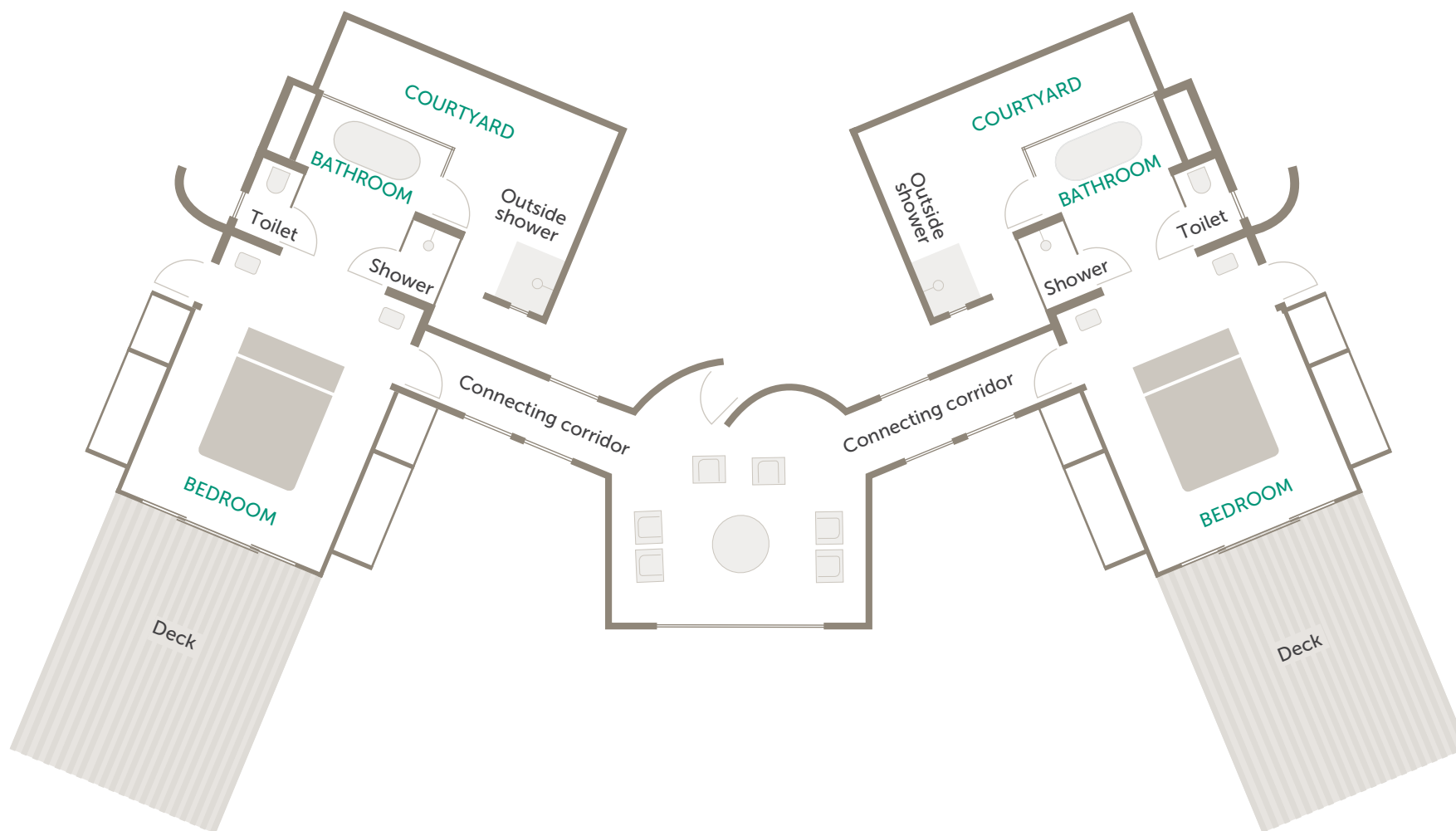


ROOM FACILITIES

Room size (square meters)	185 m ² (1 991 ft ²)
Private veranda	Yes, with daybed
Personal bar	Yes
Personal coffee station	Yes
Air conditioning / heating	No
Overhead fans	Yes
Mosquito nets	No, sealed tent
Bath	Yes, iconic 'starbath'. Weather protected with sky-views from bathtub
Shower	Indoor and outdoor showers
Seperate WC	Yes
Telephone	In-room telephones are available. Intermittent GSM mobile reception
Hairdryer	Yes
Internet access	Yes
In-room safe	Yes
Plug type	220V AC plug points in rooms Plug type: G British – BS 1363
Triple bed option	2 (children 16 years and younger)
Twin bed option	All convertible to twin or double (beds are within the same bed frame)
Interleading walkway	Yes

LUXURY FAMILY TENT

1 interleading Family Tent / Max. 2 adults & 2 children (3 children on request)





&BEYOND

DISCOVER MASAI MARA

&Beyond Kichwa Tembo Tented Camp

An authentic Kenyan safari experience; contemporary camp with a family feel; the perfect gateway to experience a wildlife adventure, celebrate community and be immersed in Maasai culture.

DISCOVER MASAI MARA

&Beyond Kichwa Tembo Tented Camp Accommodation

Why stay?

1 CONTEMPORARY SAFARI WITH A FAMILY FEEL

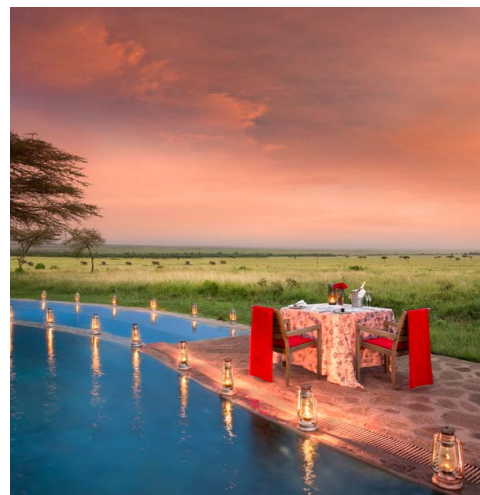
Steeped in the aura of classical safari, the camp showcases a simple yet contemporary style. Celebrating the romance and nostalgia of the Mara, this is a camp with a warm family feeling, where Kenyan hospitality abounds. The generously sized lodge swimming pool is set among the trees and surrounded by lush lawns and breathtaking views and the split-level dining area has been designed around an interactive kitchen and vegetable garden, making food an integral part of the safari experience.

2 GREAT FOR GROUPS OR COUPLES

Kichwa Tembo's selection of 40 guest tents, rim-flow lodge pool with views across the Masai Mara, spacious split-level guest area and legendary Kenyan hospitality, make it an ideal and stylish safari destination for groups, family get-togethers or more formal conference events. For couples, the team ensures they have privacy with exclusive dining location options and are able to enjoy the ambiance of the lodge or escape to their comfortable and spacious tent. Set on a private concession, the camp also offers seclusion and abundant wildlife. Our team is ready to tailormake any gathering if planned in advance, from menu to functions and celebrations.

3 MAGNIFICENT MASAI MARA LOCATION

&Beyond Kichwa Tembo Tented Camp is situated on the western border of the game rich, Masai Mara National Reserve, in the Mara Triangle – the most productive part of the Mara ecosystem. Meaning 'head of the elephant' in Kiswahili, &Beyond Kichwa Tembo Tented Camp is set on a private concession leased from Maasai landlords. Lying at the base of the Olololo Escarpment just below the area where *Out of Africa's* most famous scene was shot, the camp overlooks the plains of the Masai Mara with game frequently viewed in front of the camp. The private concession offers some of the Mara's most spectacular views, and the rare privilege of guided bush walks, an experience not permitted in the national reserve.



Great location, great views, lovely spacious "tents", friendly staff, always ready to help, delicious cuisine.



&BEYOND GUEST

DISCOVER MASAI MARA

Beyond Kichwa Tembo Tented Camp Accommodation

Camp amenities



1

CAMP POOL

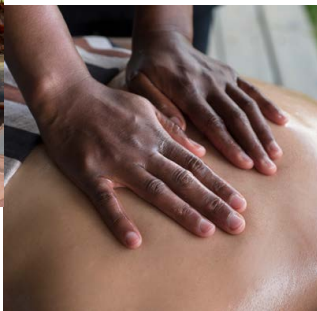
The generously sized lodge swimming pool is set among the trees and surrounded by lush lawns and spectacular views out across the Mara plains.



2

TUSKER BAR

Named after the legendary Kenyan beer, Tusker, this bar is the central hub of the camp. Guests meet here for tea before their afternoon drive, and drinks with their guides in the evening before dinner or a Maasai performance.



3

MASSAGE TENT

The Kichwa Tembo massage tent is set up to enable either a single or couples treatment. Our therapists are trained on Healing Earth products and treatments, a naturally sourced African wellness brand.



4

SAFARI SHOP

A well-stocked and sizeable Safari Shop is filled with beautiful, locally-sourced home décor items, handicrafts, and fashion items. Don't leave without authentic beaded Maasai jewellery and décor pieces, sourced from the local community of Saparingo, and local Kenyan hand-knitted toys from Kenana Knitters.



5

INTERACTIVE KITCHEN

The spacious interactive kitchen brings a cheerful atmosphere to the lodge, allowing guests to see their mouth-watering meals being prepared, quite literally, from the lodge vegetable garden (shamba) to table.



6

CONFERENCE FACILITIES

We have various areas where we are able to set up conference facilities, the main area being the space above the bar area. We have a projector and Wi-Fi and interactive TV room.

DISCOVER MASAI MARA
&Beyond Kichwa Tembo Tented Camp Accommodation



Masai Mara
NATIONAL RESERVE

&BEYOND
Kichwa Tembo

- Road
- Footpaths
- Perimeter fence
- Superior View tents
- Superior tents

DISCOVER MASAI MARA

&Beyond Kichwa Tembo Tented Camp Accommodation

Camp overview

CAMP

Maximum number of guests	68
Number of rooms	34 Tents: 26 Superior Tents and 8 Superior View Tents
Family accommodation	3 Family Tents with interleading walkways
Pilot / Guide accommodation	Available
Room types	Tented Suites
Distance between rooms	6 – 10 m (20 – 33 ft)
Check-in / Check-out times	14h00 / 10h00

DINING

Food / Dietary options	Kosher not available. Halaal and other special dietary requests available: please book in advance
Private butler service	No
Plated service	Buffet and interactive kitchen
Private dining	Yes

PAYMENT TYPES ACCEPTED

Credit cards accepted	Mastercard and Visa
Currency	USD are widely used, however, notes dated prior to 2006 are not accepted

FACILITIES

Power	24-hour power
Internet access	Yes, Wi-Fi throughout
Wine store or cellar	No
Boma	Yes
Interactive kitchen	Yes
Swimming pool	Yes, lodge swimming pool (not heated)
Wellness offering	Healing Earth wellness treatments offered in the massage tent
Fitness	No
Conference facilities	Yes
Weddings and blessings	Can be organised on request - please speak to your travel specialist
Wheelchair accessibility	Possible with assistance in certain cases
Complimentary laundry service	Yes
&Beyond Safari Shop	Yes

OTHER

Vehicle type	6-seater and 8-seater semi-open safari vehicles
Private 4x4 safari vehicle	Depending on availability and at an additional cost
Activity inclusion	Safari game drive only

DISCOVER MASAI MARA
&Beyond Kichwa Tembo Tented Camp Accommodation

Inclusions

RATE INCLUDES

Accommodation	✓
Three meals daily	✓
Soft drinks, house wines, local brand spirit and beers, teas and coffees	✓
Refreshments on safari game drives	✓
Laundry	✓
One complimentary pair of SWAROVSKI OPTIK CL Companion 8x30 binoculars per tent to share during your stay	✓
Emergency medical evacuation insurance	✓
Transfers to / from the lodge airstrip	✓
WILDchild programme (excluding goodie bag)	✓
Twice-daily safari game drives	✓
Bush walks*	✓
Maasai performance*	✓
Wild Impact community visit*	✓

*These activities may incur an additional charge for groups
Some experiences are weather dependent

RATE EXCLUDES

Telephone calls	✗
Gratuities	✗
Personal items	✗
Safari Shop purchases	✗
Champagne, cognac, fine wines, premium brand spirits, and cigars	✗
National Reserve fees	✗
WILDchild goodie bag	✗
Hot air balloon safari	✗
Community visit to a Maasai boma	✗
Maasai dancers for private functions	✗
Healing Earth wellness treatments	✗
Weddings and blessings	✗

The service was fabulous. They have the full range of game drive experiences, social and educational activities.

&BEYOND GUEST



DISCOVER MASAI MARA

BEYOND Kichwa Tembo Tented Camp Accommodation

WILDchild

Travel to Kenya is recommended for children eight years or older. Children five years and younger cannot participate in regular game drives; children aged six to 11 can participate in regular game drives at the lodge manager's discretion. Please note that, due to the fact that the lodge is not fenced off, children are required to have an adult accompanying them at all times, as well as at the swimming pool.

WILDCHILD AT KICHWA TEMBO

Children visiting the camp can take advantage of the fun-filled and interactive WILDchild programme (available at an additional cost) where little ones can participate in the following:

- Join a Maasai bow and arrow competition
- Learn how to make a fire the traditional Maasai way
- Create a beautiful beaded artwork with the Maasai women
- Enjoy a range of traditional Maasai games
- Go on a forest walk with a guide, looking for birds and animal spoor and tracks
- Identify butterflies with a guide
- Play soccer with the camp's team

CHILD POLICY*

0 - 5 years	Game drives only in a private vehicle or children's game drives (avoiding lion, leopard and elephant) outside of normal game drive time on request. No walks outside of the lodge
6 - 11 years	Game drives only at discretion of lodge manager. No walks outside of the lodge
12 - 15 years	Game drives. No walks outside of the lodge
16 years and above	All activities

*A private vehicle can be booked when staying at BEYOND Kichwa Tembo that allows the drives to be tailored to suit the ages of the children (subject to availability and at an additional cost)

CHILDMINDING

While we don't have trained childminders, we can offer the services of certain staff members who are wonderful with children. This will be at an additional cost.

Please note: The camp is not fenced off and children are required to have an adult accompanying them at all times

A series of unforgettable moments for the whole family which forge strong bonds between our young guests, our planet and its people. ”



&BEYOND KICHWA TEMBO TENTED CAMP

Accommodation

Combining contemporary style with classic safari charm, the camp delivers an exceptional wildlife experience and is perfectly suited to families and groups.



&BEYOND



DISCOVER MASAI MARA
Beyond Kichwa Tembo Tented Camp Accommodation

SUPERIOR VIEW TENTS

8 Tents / Max. 16 guests

PANORAMIC MARA VIEWS

Superior View Tents offer sweeping views of the Masai Mara and surrounds. Each tent features beautiful Maasai inspired interiors that showcase a simple and contemporary use of local materials. Boasting exceptionally beautiful visions of the nearby escarpment, look forward to uninterrupted Masai Mara views that delight beyond the expected.



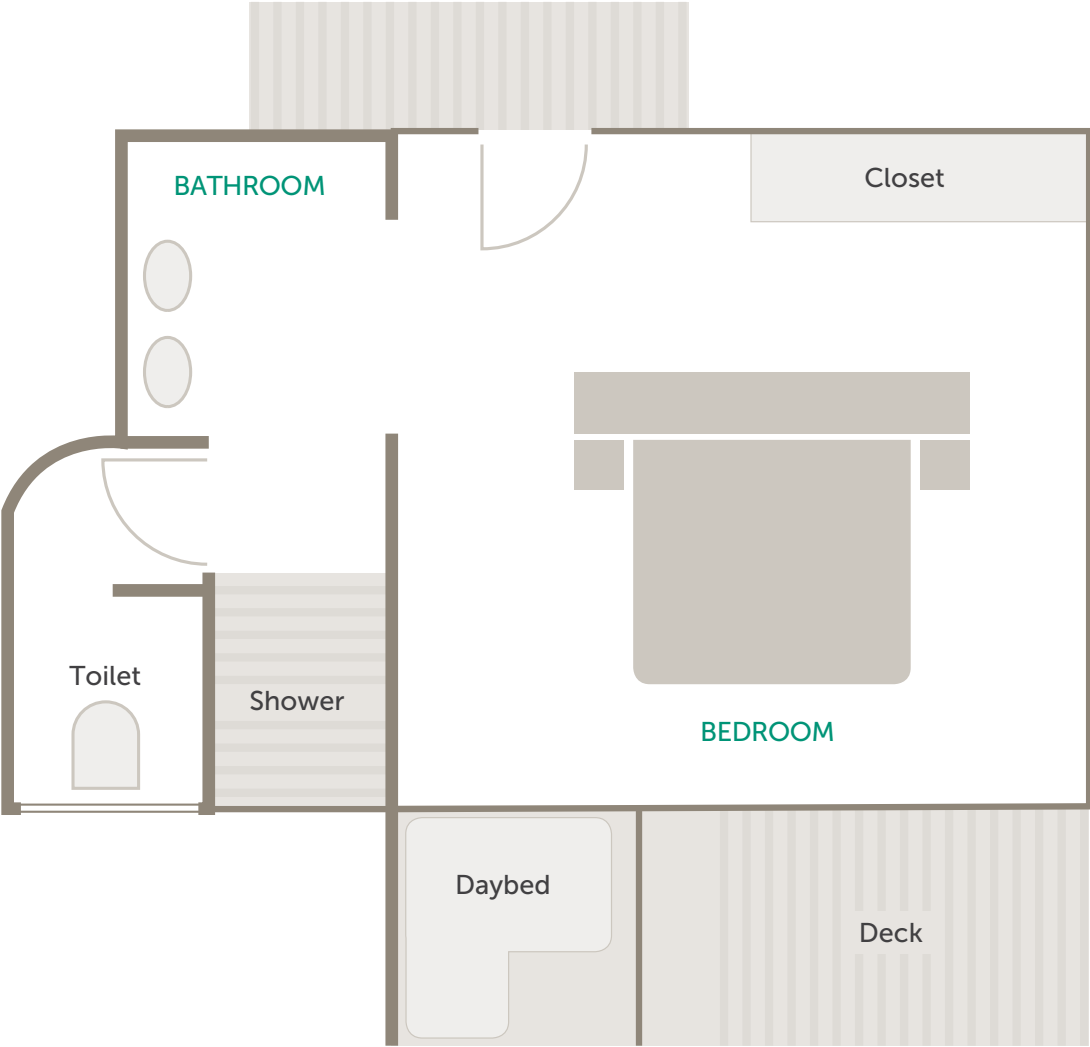
ROOM FACILITIES

Room size (square meters)	52 m² (560 ft²)
Private veranda	Yes
Personal bar	No
Personal coffee station	No
Air conditioning / heating	No
Fans	Yes, floor fans provided
Mosquito nets	No, sealed tent
Bath	No
Shower	Indoor shower
Seperate WC	Yes
Telephone	Yes
Hairdryer	Yes
Internet access	Yes
In-room safe	Yes
Plug type	220V AC plug points in rooms Plug type: G British – BS 1363 USB port available
Triple bed option	3 (children 16 years and younger)
Twin bed option	All convertible to twin or double
Wheelchair accessibility	Possible with assistance in certain cases

DISCOVER MASAI MARA
Beyond Kichwa Tembo Tented Camp Accommodation

SUPERIOR VIEW TENTS

8 Tents / Max. 16 guests



Typical Superior View Tent layout

DISCOVER MASAI MARA
Beyond Kichwa Tembo Tented Camp Accommodation

SUPERIOR TENTS

26 Tents / Max. 52 guests

AMIDST THE TREES

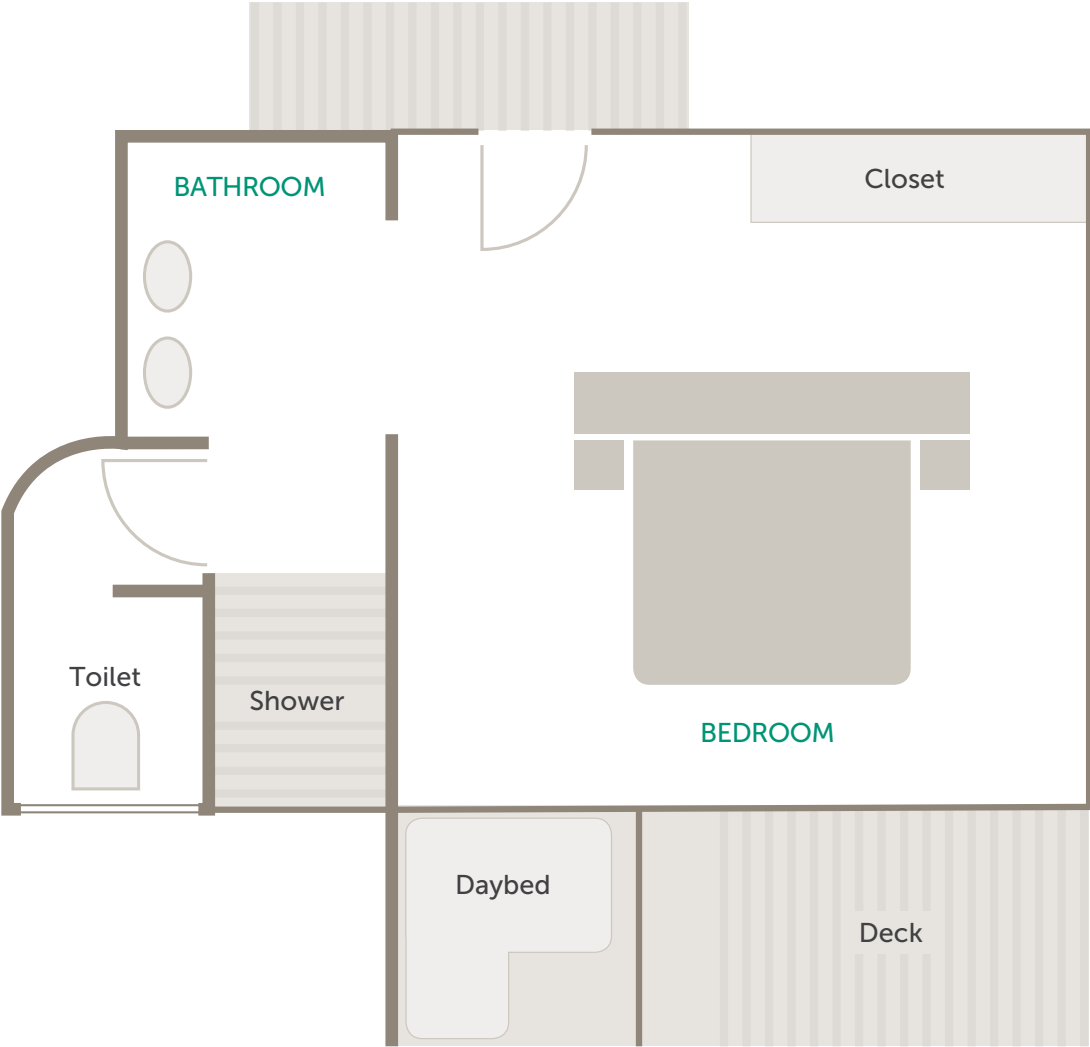
The Superior Tents feature beautiful Maasai inspired interiors that showcase a simple and contemporary use of local materials. Oversized beds are perfectly positioned to make the most of the views, while stained cypress wood furniture combine with tribal decorative elements, making for an authentic display of the culture. Some of these tents feature partial views of the Mara through the forest canopy, others are situated further back within the forest, excellent for bird lovers, while the rest look out onto the nearby escarpment.



ROOM FACILITIES

Room size (square meters)	52 m ² (560 ft ²)
Private veranda	Yes
Personal bar	No
Personal coffee station	No
Air conditioning / heating	No
Fans	Yes, floor fans provided
Mosquito nets	No, sealed tent
Bath	No
Shower	Indoor shower
Seperate WC	Yes
Telephone	Yes
Hairdryer	Yes
Internet access	Yes
In-room safe	Yes
Plug type	220V AC plug points in rooms Plug type: G British – BS 1363 USB port available
Triple bed option	3 (children 16 years and younger)
Twin bed option	All convertible to twin or double
Wheelchair accessibility	Possible with assistance in certain cases

DISCOVER MASAI MARA
&Beyond Kichwa Tembo Tented Camp Accommodation



Typical Superior Tent layout

DISCOVER MASAI MARA
Beyond Kichwa Tembo Tented Camp Accommodation

SUPERIOR FAMILY TENTS

3 Tents / Max. 2 adults & 2 children per Family Tent (3 children on request)

FAMILY ADVENTURE ABOUNDS

Kichwa Tembo has three Superior Family Tents comprises two interconnected tents with an ensuite bathroom and private veranda.
Each Superior Family Tent can accommodate two adults and two children (three at special request) and are ideal for families looking to spend time together experiencing the African bush in unimaginable ways.



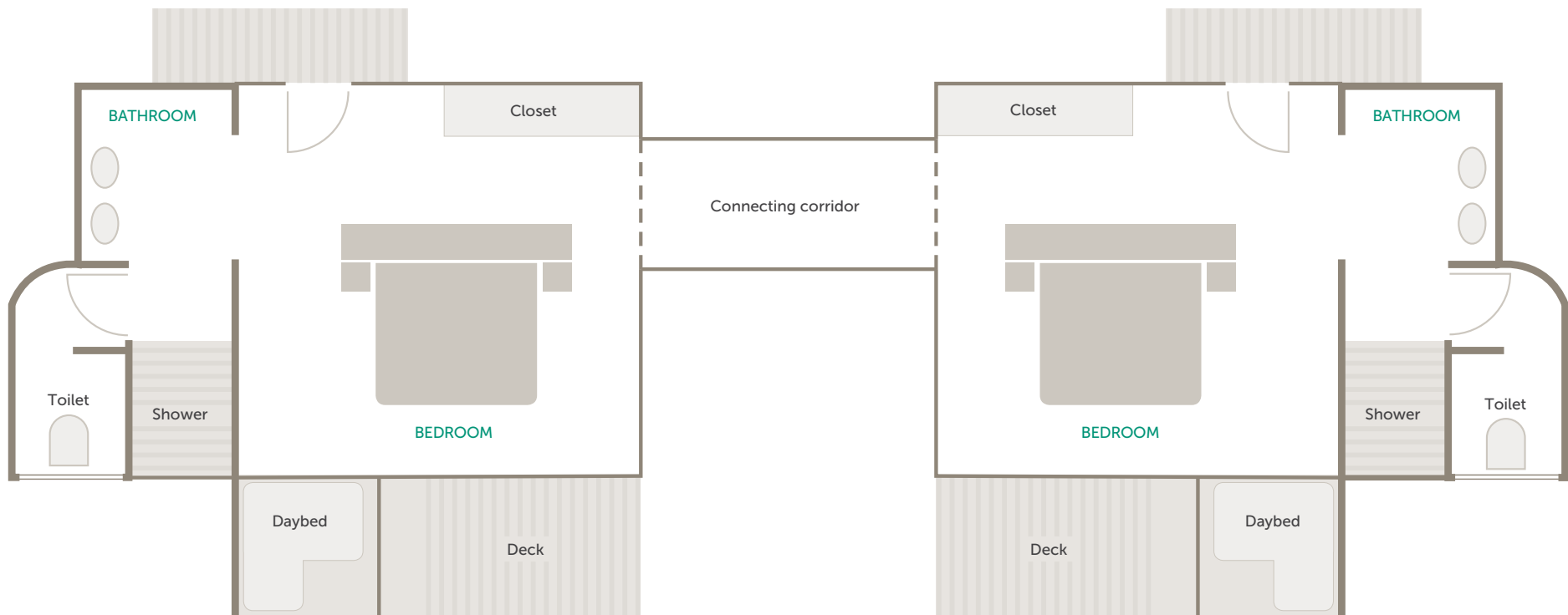
ROOM FACILITIES

Room size (square meters)	115 m ² (1 238 ft ²)
Private veranda	Yes
Personal bar	No
Personal coffee station	No
Air conditioning / heating	No
Fans	Yes, floor fans provided
Mosquito nets	No, sealed tent
Bath	No
Shower	Indoor shower
Seperate WC	Yes
Telephone	Yes
Hairdryer	Yes
Internet access	Yes
In-room safe	Yes
Plug type	220V AC plug points in rooms Plug type: G British – BS 1363 USB port available
Triple bed option	3 (children 16 years and younger) in Superior Tents only
Twin bed option	All convertible to twin or double
Interleading walkway	Yes
Wheelchair accessibility	Possible with assistance in certain cases

DISCOVER MASAI MARA
& Beyond Kichwa Tembo Tented Camp Accommodation

SUPERIOR FAMILY TENTS

3 Tents / Max. 2 adults & 2 children per Family Tent (3 children on request)



Typical Superior Family Tent layout

DISCOVER MASAI MARA
Beyond Kichwa Tembo Tented Camp Accommodation

Accommodation overview

	SUPERIOR VIEW TENT	SUPERIOR TENT	SUPERIOR FAMILY TENT
Room size (square meters)	52 m² (560 ft²)	52 m² (560 ft²)	115 m² (1 238 ft²)
Private veranda	Yes	Yes	Yes
Personal bar	No	No	No
Personal coffee station	No	No	No
Air conditioning / heating	No	No	No
Fans	Yes, floor fans provided	Yes, floor fans provided	Yes, floor fans provided
Mosquito nets	No, sealed tent	No, sealed tent	No, sealed tent
Bath	No	No	No
Shower	Indoor shower	Indoor shower	Indoor shower
Seperate WC	Yes	Yes	Yes
Telephone	Yes	Yes	Yes
Hairdryer	Yes	Yes	Yes
Internet access	Yes	Yes	Yes
In-room safe	Yes	Yes	Yes
Plug type	220V AC plug points in rooms Plug type: G British – BS 1363 USB port available	220V AC plug points in rooms Plug type: G British – BS 1363 USB port available	220V AC plug points in rooms Plug type: G British – BS 1363 USB port available
Distance from main guest area	20 - 100 m (65 - 330 ft)	20 - 300 m (65 - 980 ft)	20 - 300 m (65 - 980 ft)
Triple bed option	3 only (children 16 years and younger)	3 only (children 16 years and younger)	3 only (children 16 years and younger)
Twin bed option	All convertible to twin or double	All convertible to twin or double	All convertible to twin or double

DISCOVER MASAI MARA

Camps overview

A quick-reference comparison between the wide-ranging offerings of Bateleur and Kichwa Tembo - two luxury tented camps, both themed in the warmth of Kenyan hospitality and the spacious beauty of the Masai Mara.



6 BEYOND



DISCOVER MASAI MARA

Camps Overview

Camp comparison

OVERVIEW

	BATELEUR CAMP	KICHWA TEMBO
Maximum number of guests	36 (18 in each camp)	80
Number of rooms	9 Tents	40 Tents
Family accommodation	1 Luxury Family Tent (2 Tents with interleading passage and seating area)	3 Superior Family Tents (2 Tents with interleading walkway)
Room types	Luxury Tents	Tented Suites
Pilot / Guide accomodation	Available	Available
Distance between rooms	10 m (33 ft)	6 – 10 m (20 – 33 ft)
Check-in / Check-out times	14h00 / 10h00	14h00 / 10h00

FACILITIES

Power	24-hour power	24-hour power
Internet access	Yes, Wi-Fi throughout	Yes, Wi-Fi throughout
Wine store or cellar	No	No
Boma	Yes. in South Camp	Yes
Interactive kitchen	Yes, for breakfast only	Yes
Swimming pool	Yes, each camp has a pool (not heated)	Yes, lodge swimming pool (not heated)
Wellness offering	Healing Earth wellness treatments offered in-room or in the massage sala	Healing Earth wellness treatments offered in the massage tent
Fitness options	Well-equipped gym and gym-in-a-basket in each room (available on request)	No
Conference facilities	No	Yes
Weddings and blessings	Yes, consult your travel specialist	Yes, consult your travel specialist
Wheelchair accessibility	Possible with assistance in certain cases	Possible with assistance in certain cases
Complimentary laundry service	Yes	Yes
BEYOND Safari Shop	Yes	Yes

(continues on next page)

Camp comparison (cont.)

DINING	BATELEUR CAMP	KICHWA TEMBO
Food / Dietary options	Kosher not available. Halaal and other special dietary requests available – please book in advance	Kosher not available. Halaal and other special dietary requests available – please book in advance
Butler service	Yes	No
Plated service	Yes	Buffet
Private dining	Yes	Yes
PAYMENT ACCEPTED		
Credit cards accepted	Visa and Mastercard	Visa and Mastercard
Currency	USD are widely used, however, notes dated prior to 2006 are not accepted	USD are widely used, however, notes dated prior to 2006 are not accepted
OTHER		
Vehicle type	4-seater and 6-seater semi-open safari vehicles	6-seater and 8-seater semi-open safari vehicles
Private 4x4 safari vehicle	Depending on availability and at an additional cost	Depending on availability and at an additional cost
Activity inclusion	8Beyond lodge and safari activities, excluding hot air balloon safaris, community visits to a Maasai boma, wellness treatments and Maasai dancers for private functions	Safari game drive only

Accommodation comparison

	BATELEUR CAMP LUXURY TENTS & FAMILY TENT	KICHWA TEMBO SUPERIOR VIEW TENTS	SUPERIOR & SUPERIOR FAMILY TENTS
Room size (square meters)	Luxury Tent: 87 m ² (936 ft ²) Luxury Family Tent: 185 m ² (1 991 ft ²)	52 m ² (560 ft ²)	Superior Tent: 115 m ² (1 238 ft ²) Superior Family Tent: 52 m ² (560 ft ²)
Private veranda	Yes	Yes	Yes
Personal bar	Yes	No	No
Personal coffee station	Yes	No	No
Air conditioning / heating	No	No	No
Overhead fans	Yes	No, floor fans	No, floor fans
Mosquito nets	No, sealed tent	No, sealed tent	No, sealed tent
Bath	Yes	No	No
Shower	Indoor and outdoor showers	Yes, indoor	Yes, indoor
Seperate WC	Yes	Yes	Yes
Telephone	In-room telephones are available	In-room telephones are available	In-room telephones are available
Hairdryer	Yes	Yes	Yes
Internet access	Yes	Yes	Yes
In-room safe	Yes	Yes	Yes
Plug type	220V AC (plug points in rooms) Plug type: G British – BS 1363	220V AC (plug points in rooms) Plug type: G British – BS 1363	220V AC (plug points in rooms) Plug type: G British – BS 1363
Triple bed option	2 (children 16 years and younger)	3 (children 16 years and younger) in Superior Tents only	3 (children 16 years and younger) in Superior Tents only
Twin bed option	All convertible to twin or double	All convertible to twin or double	All convertible to twin or double



andBEYOND



@andbeyondtravel
#seewhatliesbeyond

andBeyond.com