

DISCOVER MASAI MARA

&Beyond Bateleur Camp

A classic and intimate safari experience in a private corner of the Masai Mara, with timeless views across Africa's great plains, intrepid adventure, wildlife magic and authentic community interactions.



&BEYOND



DISCOVER MASAI MARA
&Beyond Bateleur Camp

Why stay?

1 BREATHTAKING VIEWS OVER THE MASAI MARA

Timeless views across the boundless plains of the Masai Mara; known to the Maasai as the 'spotted' land, the savanna landscape that unfolds in front of the camp is dotted with balanites trees – a definitive feature of this region. With unbroken views over the grassy plains, guests can while-away their afternoon on the private deck of their tent, or alongside the camp swimming pool. Alternatively, take advantage of a wellness treatment or sip on a delicious cocktail at our G&T bar.

2 BUCKET LIST EXPERIENCES ON A PRIVATE CONCESSION

At Bateleur Camp, we take full advantage of the private concession and guest experiences are designed to fully embrace the variety of opportunities this brings. Delight in delicious hearty breakfasts in the wild, chilled sundowners in the vast expanse and bush dinners under star-studded skies. Participate in fascinating bush walks and thrilling night drives. Or just simply go on a safari game drive, to experience the abundance of wildlife not far from the camp.

3 A ROMANTIC AND INTIMATE BUSH CAMP

This exclusive camp reflects the ambiance of Kenyan safaris of the '20s and '30s and is situated below the scenic location where the famous final scene of the movie *Out of Africa* was filmed. The epitome of tented luxury, Bateleur Camp is set among the forests on the edge of the Masai Mara. Warm and welcoming with effortless sophistication, the nine Luxury Tents in each camp, including one adjoining Luxury Family Tent, is ideal for family and multigenerational travel. From the complimentary use of SWAROVSKI OPTIK binoculars to the absolute delight of our safari theatre, offering frothy cappuccinos and colourful cocktails on game drives, at Bateleur Camp, local Kenyan hospitality and personalised, thoughtful service abounds. The guests experience is tailored to the needs and wants of the guest and discussed with the guide and camp manager daily.



This is a must place to stay. From the beautifully appointed accommodation, to excellent game drives and superb food, why would you go anywhere else?



Camp amenities



1

CAMP INFINITY POOLS

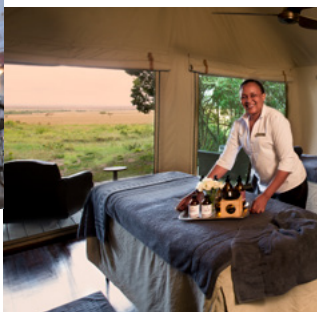
Each camp has its own swimming pool, to be enjoyed by the guests. The two pools have magnificent views over the plains, and offer the perfect place not only to refresh, but to enjoy meals.



2

FROM DAY TO NIGHT

Guests staying at both Bateleur South and North camps can enjoy the bar area. A 'coffee bar' by day and 'gin bar' by night', it features a selection of Kenyan coffees and creative cocktails. Perhaps the most popular feature is the craft gin bar, which stocks 16 different craft gins, each with its own story.



3

MASSAGE SALA

Guests are able to enjoy relaxing Healing Earth wellness and spa treatments in the intimate massage sala. Boasting the same incredible view, there are two massage tables that allow for both couple and individual treatments.



4

SAFARI SHOP

The camps share a compact &Beyond Safari Shop, which is a celebration of Kenyan high-end fashion, jewellery and accessories. Look forward to an exclusive collection of local designers, which includes Anna Trzebinski, Penny Winter and Antassia.



5

GYM

Next to the South Camp pool is a well-equipped, state-of-the-art exercise room, complete with treadmill, elliptical, stationary bicycle, yoga ball and weights. Guests can work out with a view of giraffe, a herd of buffalo, plenty of warthog and often elephant walking out on the plains.

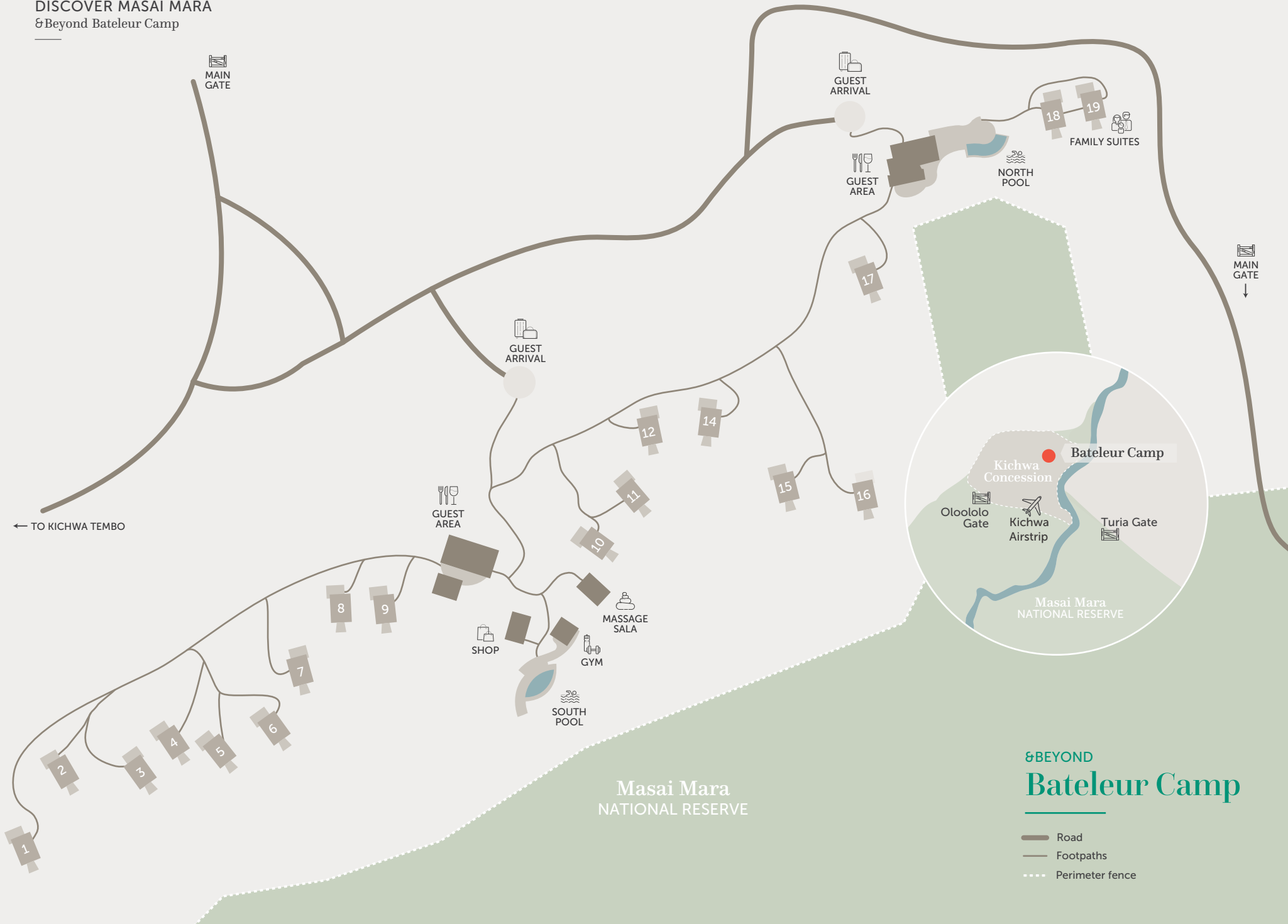


6

DINING LOCATIONS

Enjoy your meals in a variety of al fresco locations such as the outdoor boma area at the South Camp, the extended deck at North Camp, the swimming pools or the privacy of your room. Tuck into a delectable array of fresh produce, much of which is from our organic vegetable garden.

DISCOVER MASAI MARA
& Beyond Bateleur Camp



DISCOVER MASAI MARA
& Beyond Bateleur Camp

Camp overview

CAMP

Maximum number of guests	36 (18 in each camp)
Number of rooms	18 (9 in each camp)
Family accommodation	1 Family Tent (2 tents with interleading passage)
Pilot / Guide accommodation	Available
Room type	Luxury Tent
Distance between rooms	10 m (33 ft)
Check-in / Check-out times	14h00 / 10h00

DINING

Food / Dietary options	Kosher not available. Halaal and other special dietary requests available: please book in advance
Private butler service	Yes
Plated service	Yes
Private dining	Yes

PAYMENT TYPES ACCEPTED

Credit cards accepted	Mastercard and Visa
Currency	USD are widely used, however, notes dated prior to 2006 are not accepted

FACILITIES

Power	24-hour power
Internet access	Yes, Wi-Fi throughout
Wine store or cellar	No
Boma	Yes, in South Camp
Bar	Yes, a gin and coffee bar
Interactive kitchen	Yes, for breakfast only
Swimming pool	Yes, each camp has a pool (not heated)
Wellness offering	Healing Earth wellness treatments offered in-room or in the massage sala
Fitness	Well-equipped gym and gym-in-a-basket in each room (available on request)
Conference facilities	No
Weddings and blessings	Can be organised on request - please speak to your travel specialist
Wheelchair accessibility	Possible with assistance in certain cases
Complimentary laundry service	Yes
&Beyond Safari Shop	Yes

OTHER

Vehicle type	4-seater and 6-seater semi-open safari vehicles
Private 4x4 safari vehicle	Depending on availability and at an additional cost
Activity Inclusion	All &Beyond lodge and safari activities included

DISCOVER MASAI MARA
&Beyond Bateleur Camp

Inclusions

RATE INCLUDES

Accommodation	✓
Three meals daily	✓
Soft drinks, house wines, local brand spirit and beers, teas and coffees	✓
Refreshments on safari game drives	✓
Laundry	✓
One complimentary pair of SWAROVSKI OPTIK CL Companion 8x30 binoculars per tent to share during your stay	✓
Emergency medical evacuation insurance	✓
Transfers to / from the lodge airstrip	✓
WILDchild programme	✓
Twice-daily safari game drives	✓
Night drives	✓
Bush walks*	✓
Maasai performance*	✓
Bush dining*	✓
Wild Impact community visit*	✓

RATE EXCLUDES

Telephone calls	✗
Gratuities	✗
Personal items	✗
Safari Shop purchases	✗
Champagne, cognac, fine wines, premium brand spirits, and cigars	✗
National Reserve fees	✗
Hot air balloon safari	✗
Community visit to a Maasai boma	✗
Maasai dancers for private functions	✗
Healing Earth wellness treatments	✗
Weddings and blessings	✗

*These activities may incur an additional charge for groups
Some experiences are weather dependent

The deeply personal touches at the lodge and in the bush made our stay extraordinary.

&BEYOND GUEST



DISCOVER MASAI MARA
&Beyond Bateleur Camp

WILDchild

Travel to Kenya is recommended for children eight years or older. Children five years and younger cannot participate in regular game drives; children aged six to 11 can participate in regular game drives at the lodge manager's discretion. Please note that, due to the lodge not fenced off, children are required to have an adult accompanying them at all times.

WILDCHILD AT BATELEUR CAMP

Children visiting the camp can take advantage of the fun-filled and interactive WILDchild programme where little ones can participate in the following:

- Join a Maasai bow and arrow competition
- Learn how to make a fire the traditional Maasai way
- Create a beautiful beaded artwork with the Maasai women
- Enjoy a range of traditional Maasai games
- Go on a forest walk with a guide, looking for birds and animal spoor and tracks
- Identify butterflies with a guide
- Play soccer with the camp's team

CHILD POLICY*

0 - 5 years	Game drives only in a private vehicle or children's game drives (avoiding lion, leopard and elephant) outside of normal game drive time on request. No walks outside of the lodge
6 - 11 years	Game drives only at discretion of lodge manager. No walks outside of the lodge
12 - 15 years	Game drives. No walks outside of the lodge
16 years and above	All activities

*A private vehicle can be booked when staying at &Beyond Bateleur Camp that allows the drives to be tailored to suit the ages of the children (subject to availability and at an additional cost)

CHILDMINDING

While we don't have trained childminders, we can offer the services of certain staff members who are wonderful with children. This will be at an additional cost.

Please note: The camp is not fenced off, and children are required to have an adult accompanying them at all times

Get your children travelling early.
Expose them to the people, the food and
the real culture of your destination. ”





S&B BEYOND

S&B BEYOND BATELEUR CAMP

Accommodation

A classic safari experience in a secluded corner of the Masai Mara, with two intimate camps, each home to nine luxury tents.



&BEYOND KENYA

DISCOVER MASAI MARA
&Beyond Bateleur Camp Accommodation

Timeless safari elegance

Slip into a world of hardwood floors, polished silver and copper bathtubs, set against the pulse of the open Mara plains.



DISCOVER MASAI MARA
Beyond Bateleur Camp Accommodation

LUXURY TENTS

9 Tents per camp / Max. 18 guests per camp

OLD-WORLD CHARM

Classical elegance defines our Luxury Tents, with beautifully handcrafted artefacts, fine antiques and Chesterfield sofas completing each tent's tasteful interior. Ensuite bathrooms comprise both indoor and outdoor showers plus a 'star bath' boasting unparalleled sky views. Each tent has a large private deck with a comfortable daybed overlooking the Masai Mara, together with the convenience of a personal bar and coffee station.



ROOM FACILITIES

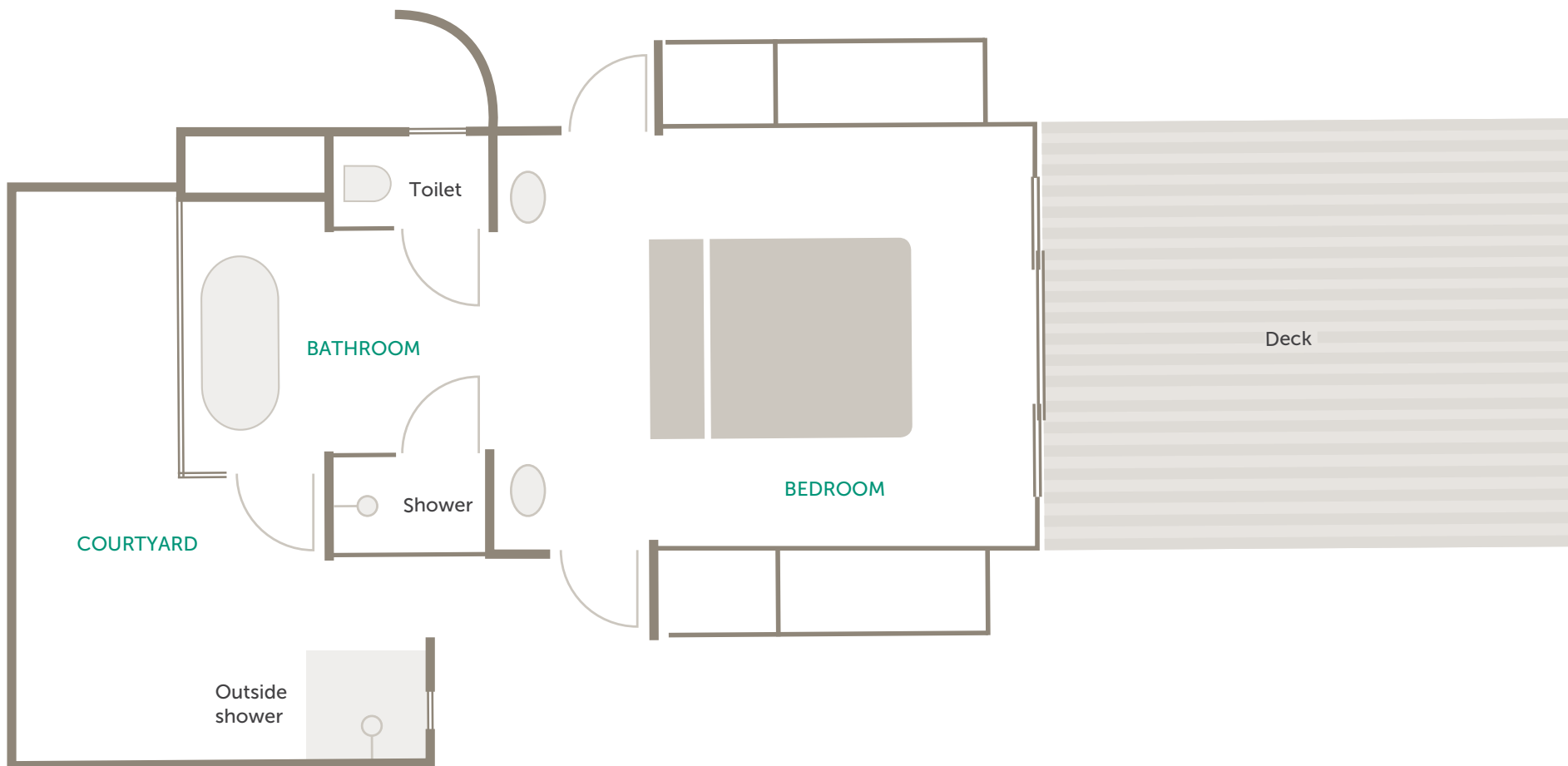
Room size (square meters)	87 m ² (936 ft ²)
Private veranda	Yes, with daybed
Personal bar	Yes
Personal coffee station	Yes
Air conditioning / heating	No
Overhead fans	Yes
Mosquito nets	No, sealed tent
Bath	Yes, iconic 'starbath'. Weather protected with sky-views from bathtub
Shower	Indoor and outdoor showers
Seperate WC	Yes
Telephone	In-room telephones are available. Intermittent GSM mobile reception
Hairdryer	Yes
Internet access	Yes
In-room safe	Yes
Plug type	220V AC plug points in rooms Plug type: G British – BS 1363
Triple bed option	2 (children 16 years and younger)
Twin bed option	All convertible to twin or double (beds are within the same bed frame)

DISCOVER MASAI MARA

&Beyond Bateleur Camp Accommodation

LUXURY TENTS

9 Tents per camp / Max. 18 guests per camp



DISCOVER MASAI MARA

& Beyond Bateleur Camp Accommodation

LUXURY FAMILY TENT

1 interleading Family Tent / Max. 2 adults & 2 children (3 children on request)

IDEAL FOR FAMILIES

The camp lends itself to family travel in the form of two spacious Luxury Tents that make up one Luxury Family Tent. A Luxury Family Tent comprises of a twin and double room with adjoining interior passage and private guest area. Each tent has its own ensuite bathroom and a private veranda as well as seating area. The Luxury Family Tent can accommodate two adults and two children (three children on request).

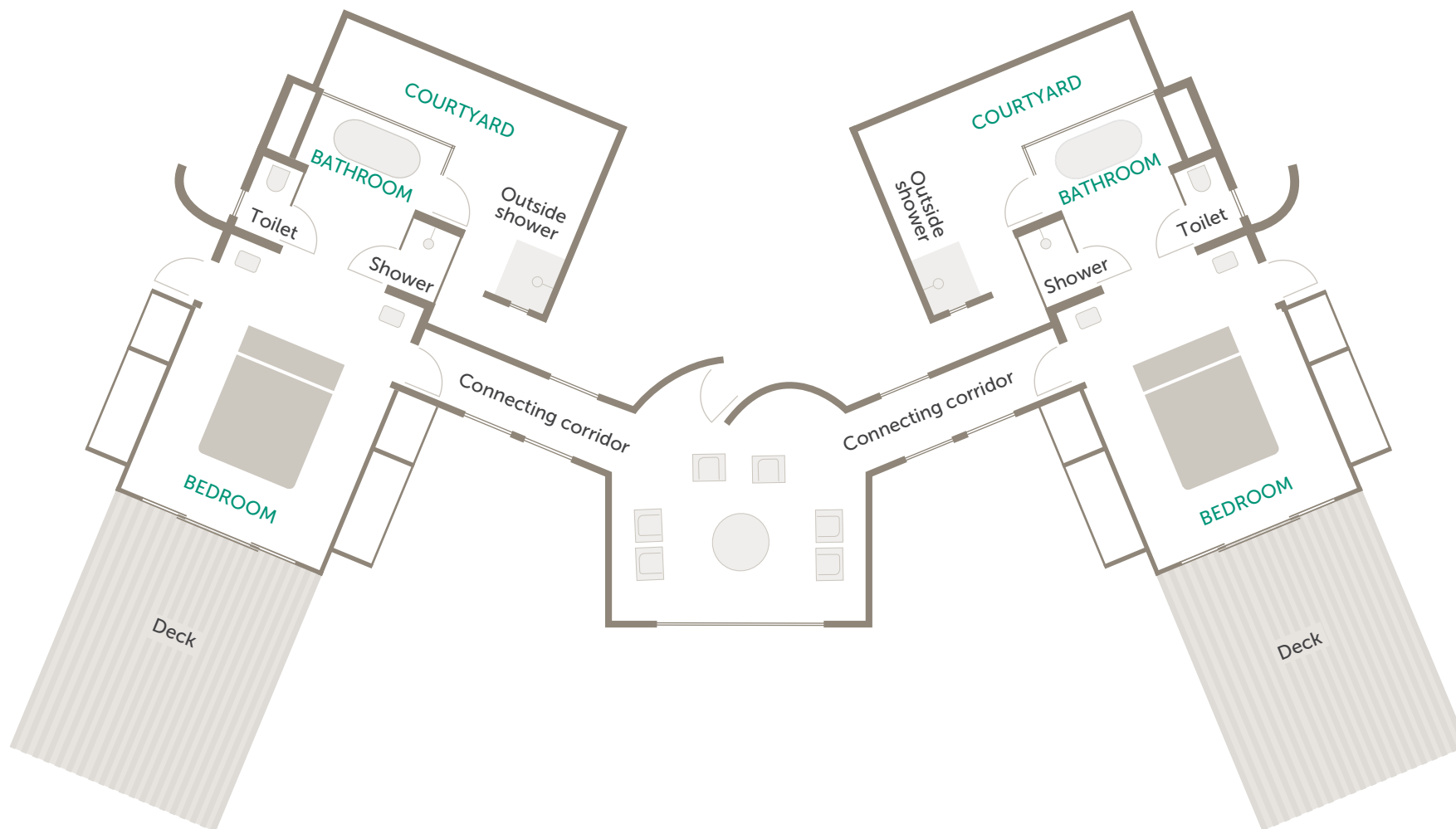


ROOM FACILITIES

Room size (square meters)	185 m ² (1 991 ft ²)
Private veranda	Yes, with daybed
Personal bar	Yes
Personal coffee station	Yes
Air conditioning / heating	No
Overhead fans	Yes
Mosquito nets	No, sealed tent
Bath	Yes, iconic 'starbath'. Weather protected with sky-views from bathtub
Shower	Indoor and outdoor showers
Seperate WC	Yes
Telephone	In-room telephones are available. Intermittent GSM mobile reception
Hairdryer	Yes
Internet access	Yes
In-room safe	Yes
Plug type	220V AC plug points in rooms Plug type: G British – BS 1363
Triple bed option	2 (children 16 years and younger)
Twin bed option	All convertible to twin or double (beds are within the same bed frame)
Interleading walkway	Yes

LUXURY FAMILY TENT

1 interleading Family Tent / Max. 2 adults & 2 children (3 children on request)





&BEYOND

DISCOVER MASAI MARA

Adventures of a lifetime

Classic safari experiences set against a backdrop of expansive landscapes, year-round wildlife theatre, Great Migration drama and the traditional world of the Maasai that is woven into these wild spaces.

DISCOVER MASAI MARA
Adventures of a Lifetime

Experiences and highlights

Go beyond the expected in the Masai Mara with adventures of a lifetime at &Beyond Kichwa Tembo and Bateleur Camp.



1

SAFARI GAME DRIVES

Spectacular landscapes filled with an abundance of wildlife make for unforgettable game drives in the Masai Mara is the quintessential African safari experience, with customised, open vehicles where guests can expect to encounter large numbers of plains game and spectacular predator interaction year-round.



2

HOT AIR BALLOON SAFARI

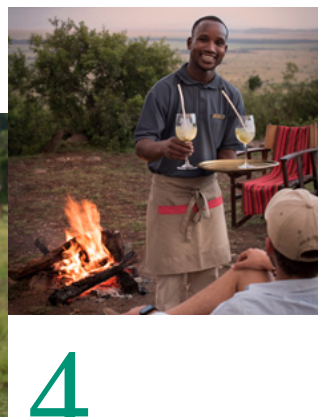
Guests will have a bird's-eye view of the Masai Mara National Reserve as they take to the dawn skies on a hot air balloon safari and float soundlessly over the boundless plains. The flight is about an hour and once landed, champagne and a full English bush breakfast in true *Out of Africa* style awaits.



3

BUSH WALKS

For those guests looking for fresh and thrilling on-the-ground views, this privately-guided activity offers the perfect opportunity to discover a multitude of natural wonders: following wildlife trails, discovering the complexities of tracking and learning to interpret the signs and sounds of the bush. Courtesy-use SWAROVSKI OPTIK binoculars will be an indispensable bonus.



4

BUSH DINING

Revel in the landscapes of Africa as you savour a meal served just like African explorers of old. Enjoy an open-air breakfast or al fresco dinner. Your every whim is taken care of, and your table set up in the wilds of Africa will make for an unforgettable dining experience.



5

MAASAI VILLAGE VISIT

Immerse yourself in authentic Maasai culture with a visit to a traditional village. Witness the daily rituals of these semi-nomadic and pastoralist people and their hustle and bustle in local life. Browse through the Maasai Craft Centre and purchase artefacts made by those you have encountered. All proceeds from this go directly to the community.

OTHER ACTIVITIES

NIGHT DRIVES ON THE PRIVATE CONCESSION

Guests can experience night drives on a private concession bordering the Masai Mara National Reserve. As the sun sinks, the African bush comes to life with predators and other nocturnal creatures

AL FRESCO PICNIC IN THE AFRICAN BUSH

With a five-star picnic lunch or breakfast, guests have the option to spend the day exploring the Masai Mara. Our guide will select a spot and set up a picnic table

MAASAI BLESSINGS OR CELEBRATIONS

A unique and special place to celebrate significant moments in life. We welcome guests that would like to revel in weddings, blessings and engagements

COMMUNITY VISIT

A community visit provides a first-hand experience of the projects Wild Impact (formerly Africa Foundation), our long-standing community and conservation development partner, is facilitating and supporting to enable future leaders, healthy ecosystems, future foundations and thriving communities

WELLNESS TREATMENTS OVERLOOKING THE PLAINS

After a safari-filled day, indulge in the pleasures of a Healing Earth wellness treatment at the Bateleur massage sala, the Kichwa massage tent or in the privacy of the guest room

SUNDOWNERS ON THE EDGE OF THE ESCARPMENT

A guest favourite - in the company of Maasai warriors, enjoy a safari sundowner ritual at Impala Point, overlooking the vast expanse of the Masai Mara National Park

Activities may incur an additional charge depending on which lodge you are staying at

DISCOVER MASAI MARA
Adventures of a Lifetime

Seasonal
highlights

YEAR-ROUND ACTIVITIES

✓ Safari game drives	✓ Sundowners on the escarpment	✓ Maasai village visit
✓ Big Five sightings	✓ Picnic in the African bush	✓ Maasai blessing or celebrations
✓ Birdwatching	✓ Bush dining*	✓ Wild Impact community visit
✓ Bush walks*	✓ Healing Earth wellness treatment	
✓ Hot air balloon safari	✓ Maasai performance	

*Weather dependent

TIMING IS EVERYTHING

	JAN	FEB	MAR	APR	MAY	JUN	JUL	AUG	SEP	OCT	NOV	DEC
Big Five game viewing	✓	✓	✓	✓	✓	✓	✓	✓	✓	✓	✓	✓
Night drives to see nocturnal animals	✓	✓	✓	✓	✓	✓	✓	✓	✓	✓	✓	✓
Bush walks	✓	✓	✓	✗	✗	✓	✓	✓	✓	✓	✗	✓
To view the Great Migration crossing over the Mara River between the Masai Mara and Serengeti	✗	✗	✗	✗	✗	✗	✓	✓	✓	✓	✗	✗
Maasai boma visit	✓	✓	✓	✓	✓	✓	✓	✓	✓	✓	✓	✓
Hot air balloon safari	✓	✓	✓	✓	✓	✓	✓	✓	✓	✓	✓	✓
To enjoy a less crowded Masai Mara, with good rates in low season	✗	✗	✓	✓	✓	✗	✗	✗	✗	✗	✓	✓
SEASONAL RATES**	\$\$\$/\$\$	\$\$	\$\$	\$	\$	\$/\$\$\$	\$\$\$	\$\$\$	\$\$\$	\$\$\$	\$\$	\$\$/\$\$\$

** The \$ / \$\$ / \$\$\$ references are used to indicate rate variation and are not associated with specific values



A day in the life

OF A GUEST

From the moment you wake up, your &Beyond experience is tailored to your interests and needs. Your butler and/or guide will discuss the day with you, including times and experiences, to ensure your day is as extraordinary as the location you are visiting. Here’s what to expect on a typical day on safari in the Masai Mara National Reserve.

TIMING

EXPERIENCE

Early morning	Early wake-up call with a hot cup of tea or coffee in your tent or at the main guest area/bar
Early morning to afternoon	<p>Depending on what you’d prefer and if the Great Migration is in season and in the area, there are a few game drive options available:</p> <ul style="list-style-type: none">• Go on an early-morning game drive with a tea and coffee stop, returning to the camp for breakfast and lunch. Enjoy the rest of your day at leisure, indulging in a wellness treatment or taking part in an optional lodge activity. Savour High Tea at the camp before heading out for an optional afternoon experience and/or game drive• Go on a morning game drive with either a tea and coffee stop or a pre-packed picnic bush breakfast, before returning to the camp for lunch. Enjoy the rest of your day at leisure, indulging in a wellness treatment or taking part in an optional lodge activity. Savour High Tea at the camp before heading out for an optional afternoon experience and/or game drive• When the Great Migration is in season and in the area, enjoy breakfast at the camp before heading out on a full-day game drive with a pre-packed picnic bush lunch. Return to the camp for dinner <p><i>Your guide will discuss your day with you the night before, confirming all available experiences beforehand. Please note, for added flexibility, a private vehicle must be booked in advanced at an additional cost</i></p>
Early morning to mid-morning (optional)	Be picked up from the camp for a balloon safari, following by a bush breakfast and shortened game drive on the way back to the camp
Optional activities	<p>Go on a local Maasai village visit or spend time with the Impact Team learning about the Nyakweri Forest and our other Wild Impact initiatives</p> <p><i>These experiences need to be selected as per your game drive schedule</i></p>
Evening	<p>Sip on your favourite pre-dinner drink of choice before enjoying dinner at the camp</p> <p><i>A Maasai dancing ceremony takes place every other night at the camp</i></p>
Late evening	Go on a pre-booked night game drive in search of the reserve’s nocturnal creatures

Timings and guest experiences are guidelines only.
All experiences are subject to availability and weather dependent. Some experiences are at an additional cost.



DISCOVER MASAI MARA

Great Wildebeest Migration

1 ONE OF THE 7 NATURAL WONDERS OF THE WORLD

Considered the most thrilling spectacle in the animal kingdom, this epic journey migrates from Tanzania's Serengeti to Kenya's Masai Mara.

2 THE WORLD'S LARGEST OVERLAND MAMMAL MIGRATION

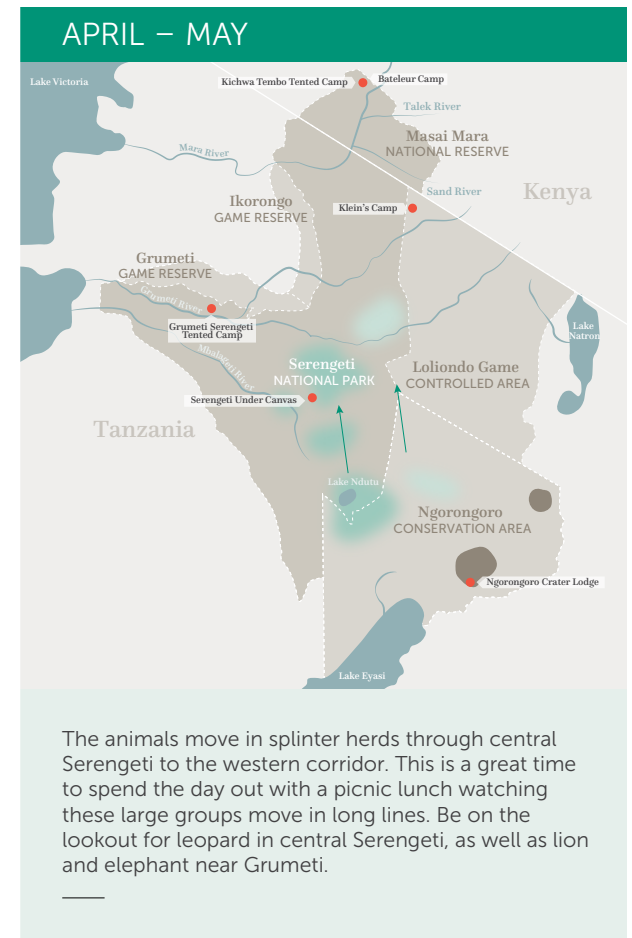
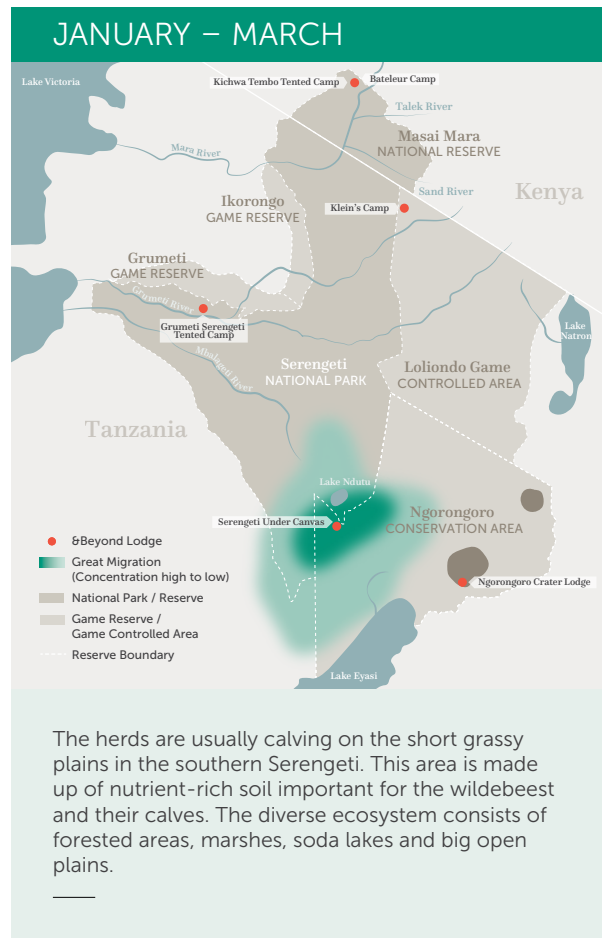
The annual movement of wildebeest and other herbivores across the Serengeti–Mara ecosystem consists of more than 1.5 million wildebeest, 500 000 zebra, 200 000 Thompson's gazelle and 18 000 eland.

3 THE ANIMALS MIGRATE OVER 800 KM (500 MI)

Due to the sheer size of the herd, the animals have to move to be able to survive. The herds generally follow the rain, as where there is rain, there is fresh grass. Once grass is depleted in one area, they will move on to a grassy area.

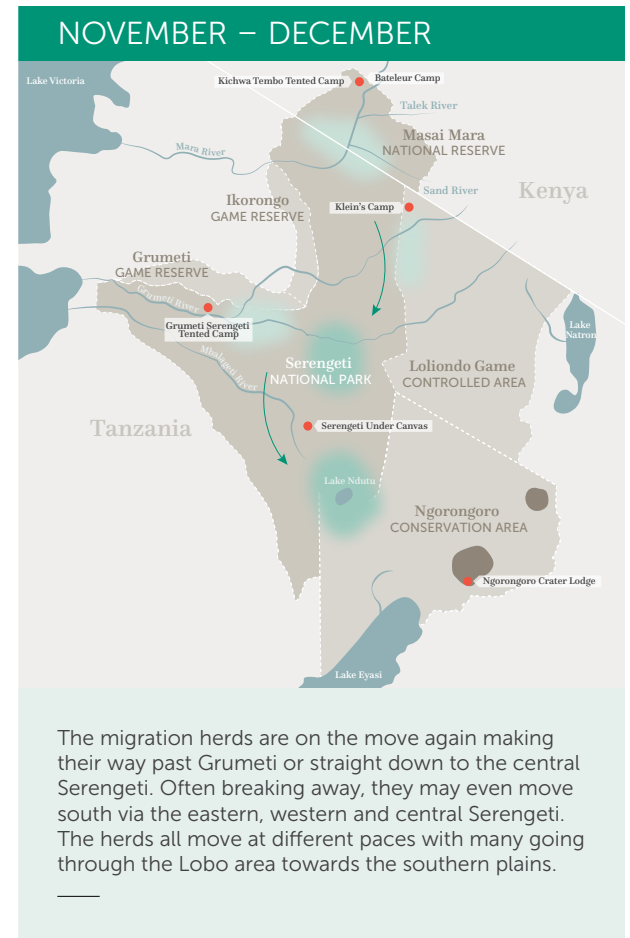
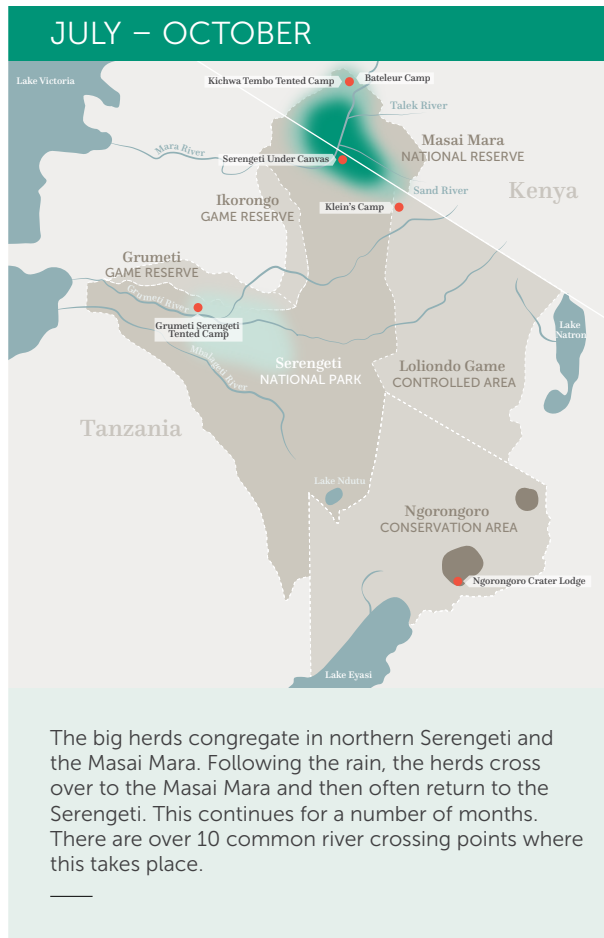
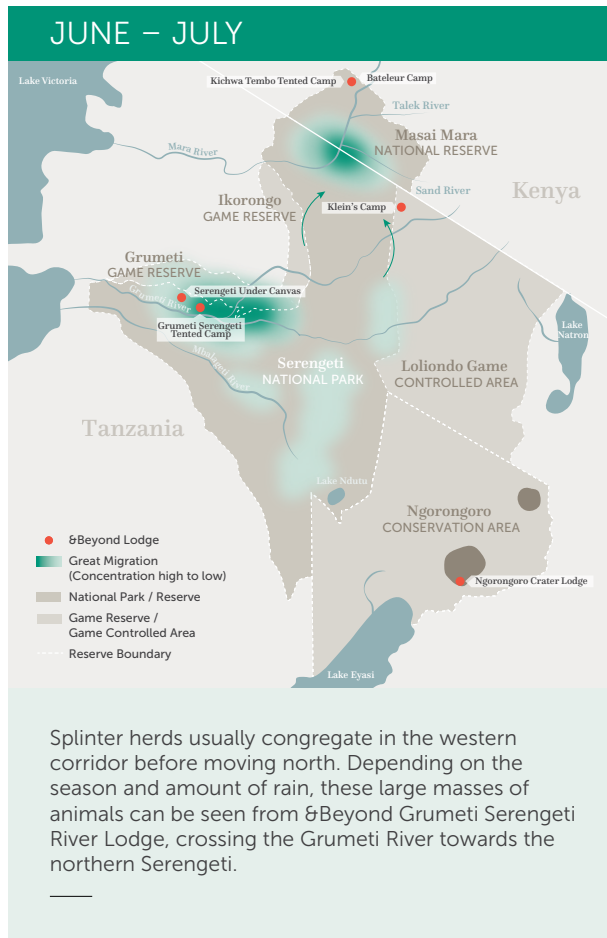
It's estimated 500 000 wildebeest calves are born annually.

The annual movement of wildebeest and other herbivores across the Serengeti-Mara ecosystem is rarely the same in terms of precise timing and direction.



(continues on next page)

Great Wildebeest Migration (cont.)



Visiting East Africa and travelling across this vast landscape requires much thought and attention. Contact your preferred travel specialist to assist with your travel plans.

There are scheduled flights twice-daily on light aircraft from Nairobi's Wilson Airport to Kichwa Tembo's private airstrip

Mombasa Air operates daily flights (approximately two hours) from Mombasa to Nairobi

Flights connect from the Masai Mara to Entebbe via Kisumu

Flights connect from the Masai Mara to the Serengeti and Kigali via the Migori / Tarime border

The Masai Mara is accessible by road from Nairobi with 4x4 vehicle. Road transfer times dependant on traffic

NAIROBI	35mins 3hrs 45mins	AMBOSELI					
1hr 30mins 6hrs	2hrs 35mins Not advised	SAMBURU NP					
35mins 3hrs 30mins	1hr 10mins Not advised	35mins 4hrs 30mins	LAIKIPIA				
55mins 5hrs	2hrs 55mins Not advised	30mins 3hrs 30mins	45mins 3hrs	MERU			
1hr 15mins 5hrs 30mins	3hrs 35mins Not advised	1hr 30mins Not advised	1hr 10mins Not advised	3hrs 5mins Not advised	MASAI MARA		
30mins 3hrs	3hrs 45mins 35mins	1hr 10mins 7hrs	40mins 3hrs 30mins	1hr 20mins 5hrs 30mins	3hrs 35mins 7hrs	RIFT VALLEY	
1hr 10mins Not advised	5hrs 30mins Not advised	5hrs Not advised	5hrs Not advised	5hrs 30mins Not advised	2hrs 35mins Not advised	5hrs Not advised	KENYAN COAST



KENYA

- 1 Bateleur Camp
- 2 Kichwa Tembo Tented Camp
- 3 Suyian Lodge

TANZANIA

- 4 Klein's Camp
- 5 Grumeti Serengeti River Lodge
- 6 Serengeti Under Canvas
- 7 Ngorongoro Crater Lodge
- 8 Lake Manyara Tree Lodge
- 9 Mnemba Island



andBEYOND



@andbeyondtravel
#seewhatliesbeyond

andBeyond.com