

DISCOVER NGORONGORO CRATER

&Beyond Ngorongoro Crater Lodge

Where Maasai meets Versailles, themed in romance on the rim of Ngorongoro's ancient caldera; wildlife in abundance, sunsets to the rhythm of Maasai chants and a world of mindful impact.



&BEYOND



DISCOVER THE NGORONGORO CRATER ✦ Beyond Ngorongoro Crater Lodge

Why stay?

1 STEEPED IN ROMANCE

Reminiscent of a bygone era, three intimate camps are steeped in romance, with each stilted, handcrafted mud and thatch suites adorned with graceful antiques, grand chandeliers and elegant African treasures. Watch and listen to the mesmerizing chant of Maasai warriors, overlooking the game-rich Crater as the sun goes down, or enjoy a wine tasting in the wine store. Personal butlers discretely cater for each guest's every need, bringing tea in bed, stoking fireplaces and drawing bubble baths.

2 THAT MAGNIFICENT VIEW...

Perched above cool, swirling mists on the edge of the Ngorongoro Crater, the lavish safari suites at ✦ Beyond Ngorongoro Crater Lodge offer breath-taking views. Frequently described as Maasai meets Versailles, each camp has its own guest sitting and dining areas, as well as viewing decks. Lodge experiences at Ngorongoro Crater, the world's largest intact caldera, are designed to ensure you soak up the spectacular views. Watch the sunset to the chant of the Maasai, swathed in bright red shukkas (traditional fabric), or soak in your bathtub looking out onto a magical landscape.

3 DIVERSITY OF ADVENTURES

An adventure haven and cultural utopia, this area features a variety of memorable activities. Aside from sublime game drives, indulge in a feast on the Crater floor, enjoy three amazing hikes, meet the Hadzabe people or visit a traditional Maasai boma. Discover Olduvai Gorge or spend a day with a lion conservation team. Enjoy lodge activities with dinner in the wine cellar, sundowners with Maasai or a beading lesson.



WOW is truly the only way to sum up our honeymoon stay at the Ngorongoro Crater Lodge. Pictures truly do not do this gorgeous lodge justice - it is absolutely stunning, opulent, indulgent, like a fairy tale come to life. ”

✦ BEYOND GUEST

DISCOVER NGORONGORO CRATER

& Beyond Ngorongoro Crater Lodge

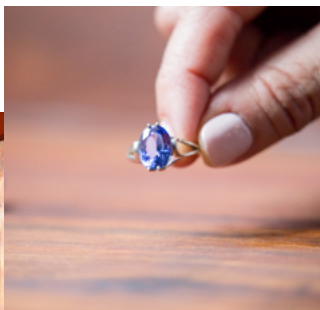
Lodge amenities



1

SIGNATURE SHOP

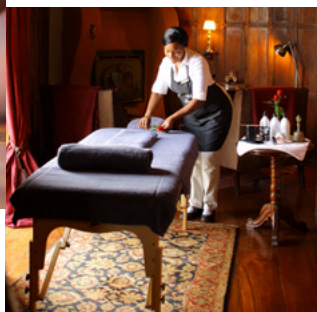
A signature Safari Shop celebrates high end designers and locally made Tanzanian crafts.



2

TANZANITE STORE

Purchase your loved one a piece of genuine Tanzanite while at Ngorongoro Crater Lodge.



3

IN ROOM MASSAGE

Two massage therapists are available for treatments with natural Healing Earth products in the comfort and privacy of your suite.



4

WINE STORE

Enjoy the privacy of our wine store where you could enjoy a champagne tasting, a pairing dinner or a private dinner.



5

PRIVATE SUNDOWNER SITE

Book a private site overlooking the crater for blessings, celebrations or just the most spectacular sundowners with Maasai chanting in the background.

IMPACT INITIATIVES

We collaborate closely with **Wild Impact** (formerly Africa Foundation), our long-standing community and conservation development partner, on a range of initiatives and programmes:

Over USD 420 000 invested since 2006 into education and healthcare in neighbouring communities.

Community Leaders Education Fund: 42 tertiary level students supported through bursaries.

Conservation lessons: Creating awareness through education where over 130 children and adults partake annually.

We are creating **conservation awareness** through education where over 203 children and adults partake annually

79% of our team are employed from local communities.

79% of goods are procured locally in Tanzania.

We purify our own still and sparkling water on site, at our **water purification plant**, using recycled **glass bottles**. Through this we have completely eliminated the use of plastic water bottles in the lodge.

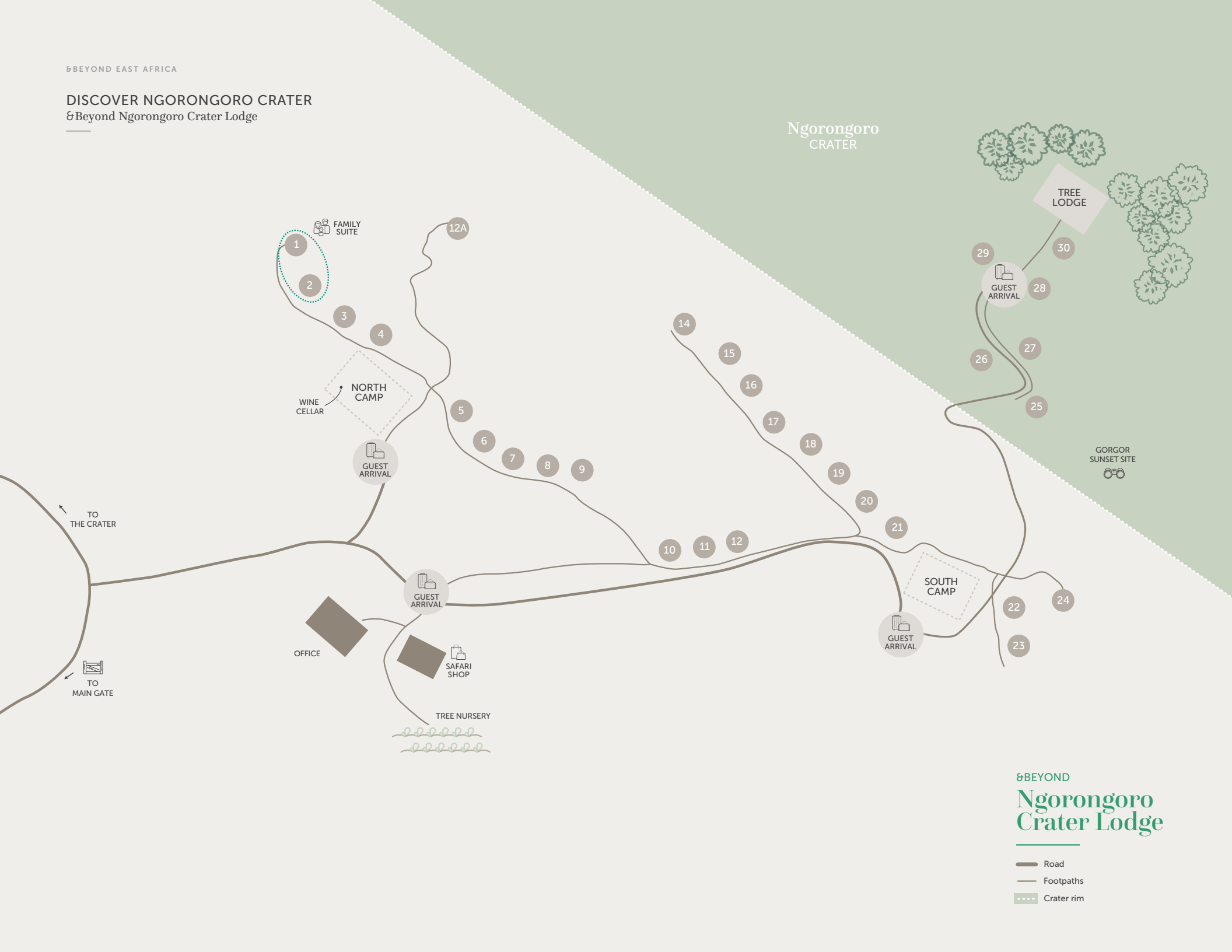
We are a part of the **Lionscape Coalition**, which supports lion conservation efforts through the Lion Recovery Fund.

Recycling: All plastic, glass, and materials such as old engine oil are sent away for re-use and recycling.

Energy measurement & management: Energy use is tracked and reported on a monthly basis. This includes the use of wood, petrol, diesel, electricity, gas, paraffin and charcoal.

We take steps to **conserve water**, including monitoring usage closely

DISCOVER NGORONGORO CRATER
&Beyond Ngorongoro Crater Lodge



DISCOVER NGORONGORO CRATER
&Beyond Ngorongoro Crater Lodge

Lodge overview

LODGE

Maximum number of guests	60
Number of rooms	30 (including a Family Suite). Three intimate camps (one of six suites and two of 12 suites (one of these camps includes a family suite)
Family accommodation	1 Family Suite (2 suites with interleading door)
Pilot / Guide accomodation	Available
Room types	Suites
Distance between rooms	5 – 16m / 26 – 53ft
Check in/Check out times	14h00 / 10h00

DINING

Food / Dietary options	Kosher not available. Halaal and other special dietary requests available: please book in advance
Private butler service	Yes
Private dining	Yes

PAYMENT TYPES ACCEPTED

Credit cards accepted	Mastercard and Visa
Currency	USD are widely used, however, notes dated prior to 2006 are not accepted

FACILTIES

Power	24-hour electricity
Internet access	Yes, Wi-Fi in guest suites only
Wine store or cellar	Yes
Boma	No
Interactive kitchen	No
Swimming pool	No
Wellness offering	Healing Earth treatments offered in-room only
Fitness	Gym-in-a-basket in each room
Conference facilities	These can be organised- please consult your travel specialist
Weddings & blessings	These can be organised- please consult your travel specialist
Wheelchair accessibility	Two rooms accessible with assistance, as all rooms have stairways. All main areas have stairs, North Camp has a small ramp to the main area
Complimentary laundry service	Yes
&Beyond safari shop	Yes

OTHER

Vehicle type	4 seater semi-open safari vehicle
Private 4x4 safari vehicle	Depending on availability and at an additional cost
Private photographic vehicle	No

DISCOVER NGORONGORO CRATER

&Beyond Ngorongoro Crater Lodge

Inclusions

RATE INCLUDES

Accommodation	✓
Three meals daily	✓
Soft drinks, house wines, local brand spirit and beers, teas and coffees	✓
Refreshments on game drives	✓
Laundry	✓
One complimentary pair of SWAROVSKI OPTIK CL Companion 8x30 binoculars per suite to share during your stay	✓
Emergency medical evacuation insurance	✓
WILDchild programme	✓
Game drives on Crater floor	✓
Walks within the lodge grounds	✓

RATE EXCLUDES

Administration fee	✗
Telephone calls	✗
Gratuities	✗
Personal items	✗
Shop purchases	✗
Champagne, cognacs, fine wines, premium brand spirits, cigars	✗
Park fees (and government charges); Crater and concession fees	✗
Healing Earth Wellness treatments	✗
Weddings and blessings	✗
Infrastructure tax of USD 1.00 pppn*	✗
Transfers Lake Manyara Airstrip to Ngorongoro Crater Lodge and return	✗
Crater floor banquets	✗
Day trips to Olduvai Gorge and Shifting Sands	✗
Choice of three walking safaris, ranging from a few hours to full-day experiences	✗
Option of champagne tasting, a pairing dinner or a private dinner in the Wine Store	✗
Hadzabe Bushmen experience	✗
KopeLion conservation experience	✗
Scenic road transfer between the lodge and &Beyond Serengeti Under Canvas, while in the Ndutu area	✗
Privately Guided Tanzania Safari (subject to availability of guides)	✗

*per person per night

NOTE: Unmanned Aerial Vehicles: Please be advised that the use of unmanned aerial vehicles (Drones) are prohibited in the conservation areas we manage, until such time as their impact on wildlife and anti-poaching initiatives can be assessed. This rule will apply throughout Africa, as our partners in various countries and regions have adopted a similar stance.



DISCOVER NGORONGORO CRATER
&Beyond Ngorongoro Crater Lodge

WILDchild

Families and groups will fall in love with the diversity and adventure of Ngorongoro Crater Lodge. There is one family suite consisting of two ensuite rooms. &Beyond Ngorongoro Crater Lodge can accommodate four triples of children 16 years or younger upon request. Tree Camp cannot accommodate triples. Travel to Tanzania is recommended for children eight years or older.

WILDCHILD AT &BEYOND NGORONGORO CRATER LODGE

Children will have the opportunity to embark on our very exciting WILDchild programme, filled with fun, interactive activities that offer opportunities to learn and discover new experiences and cultures. Our adventures at &Beyond Ngorongoro Crater Lodge include:

- Wood carving (with Carver Dullah' in his workshop)
- Tree planting in the tree nursery
- Bead work with the Maasai mamas
- A bow and arrow adventure
- Baking cupcakes with the lodge's chefs or
- A game of soccer with the Buffalo Team, the lodge's official Soccer team.

TANZANIA CHILD POLICY*

0-5 years	Game drives only private vehicle or children's game drive (avoiding lion, leopard and elephants), outside of normal game drive time. No walks outside of the lodge.
6-11 years	Game drives and boating activities at discretion of lodge manager, at guides/rangers discretion during activity. No walks outside of the lodge
12-15 years	Game drives and nature walks
16 years and above	All activities permitted

**A private vehicle can be booked when staying at &Beyond Ngorongoro Crater Lodge that allows the drives to be tailored to suit the ages of the children (subject to availability and at an additional cost).*

CHILD MINDING

While we don't have trained child minders, we can offer the services of certain staff members who are wonderful with children. This will be at an additional cost.

Please note: The lodge is not fenced off and children are required to have an adult accompanying them at all times.

The experience for the kids at &Beyond Ngorongoro Crater was like something out of a story book. ”

&BEYOND GUEST





&BEYOND NGORONGORO CRATER LODGE

Maasai meets Versailles

Perched above swirling mists on the edge of the Ngorongoro Crater and offering breathtaking views, one of the most spectacular lodges in Africa features lavish safari suites inspired in design by a Maasai homestead.



&BEYOND

DISCOVER NGORONGORO CRATER
&Beyond Ngorongoro Crater Lodge accomodation

SUITE

30 suites / Maximum 60 guests

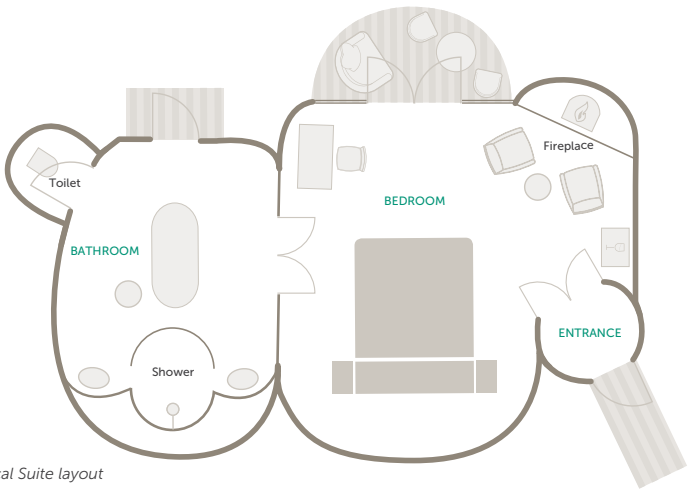


LUXURY HAVENS
OF BEAUTY

Steeped in romance, each stilted, handcrafted mud and thatch suite is adorned with graceful antiques, grand chandeliers and elegant African treasures. The bedroom, sitting room and ensuite bathroom boast floor-to-ceiling glass windows overlooking the magnificent Crater below.

ROOM FACILITIES

Personal bar	Yes
Personal coffee station	Yes
Air conditioning / heating	Enclosed wood fire in room
Overhead fans	No
Mosquito nets	No
Bath	Yes
Shower	Yes
Seperate W.C	Yes
Telephone	In-room telephones are available. Intermittent GSM mobile reception
Hairdryer	Yes
In-room safe	Yes
Plug type	220V AC plug points in rooms. Plug type: G British – BS 1363
Triple bed option	4 (children 16 years and younger); triples are not possible at Tree Camp
Twin bed option	All convertible to double (4 beds that can separate completely)



Typical Suite layout

DISCOVER NGORONGORO CRATER
& Beyond Ngorongoro Crater Lodge accomodation

FAMILY SUITE

1 interleading family suite / Maximum 2 adults & 2 children (3 children on request)

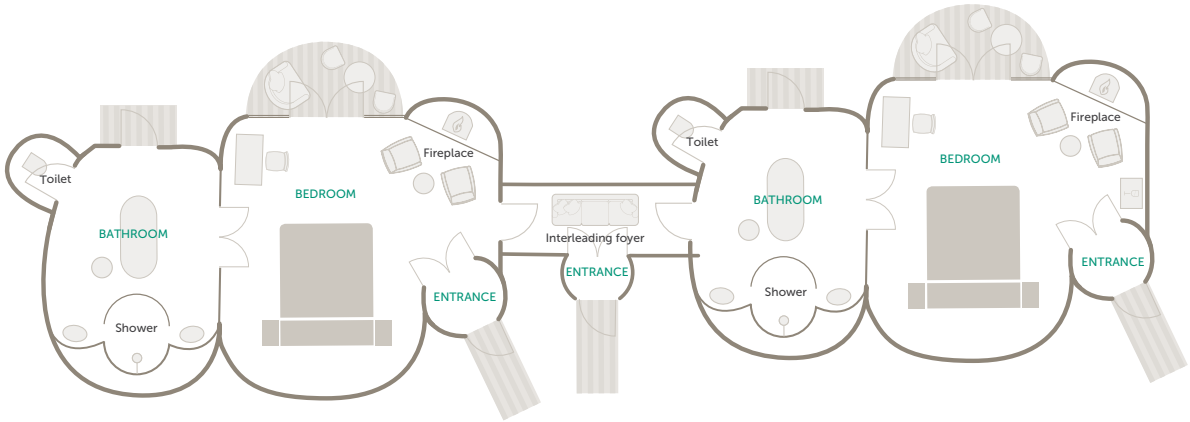


SPACIOUS, CREATIVE
AND INVITING

Two suites are conveniently interlinked via a closed walkway, which allows access between the suites, while maintaining complete privacy. The family suite can accommodate two adults and two children (three children can be provided for on special request).

ROOM FACILITIES

Personal bar	Yes
Personal coffee station	Yes
Air conditioning / heating	Enclosed wood fire in room
Overhead fans	No
Mosquito nets	No
Bath	Yes
Shower	Yes
Seperate W.C	Yes
Telephone	In-room telephones are available. Intermittent GSM mobile reception
Hairdryer	Yes
In-room safe	Yes
Plug type	220V AC plug points in rooms. Plug type: G British – BS 1363
Triple bed option	4 on request (children 16 years and younger); triples are not possible at Tree Camp
Twin bed option	All convertible to double (4 beds that can separate completely)
Interleading walkway	Yes



Typical Family Suite layout

DISCOVER NGORONGORO CRATER

&Beyond Ngorongoro Crater Lodge

Experiences and highlights



1

GAME DRIVES

Game drives descend into the Ngorongoro Crater through a lush highland forest, with magnificent birdlife to be spotted among the different tree species. Once on the grassy crater floor, discover a large variety of grazing herbivores, as well as predators. Depending on the time of year, you may see huge flocks of pink flamingo around the shores of the shallow Lake Magadi.



2

CRATER FLOOR BANQUET

Indulge in a gourmet feast served in one of the most unique settings in Africa. Enjoy the incredible density of wildlife before making your way to a private picnic spot on the Crater floor. Tables set with snowy tablecloths and sparkling silver cutlery are laden with the most delectable of dishes.



3

EMPAKAI CRATER HIKE

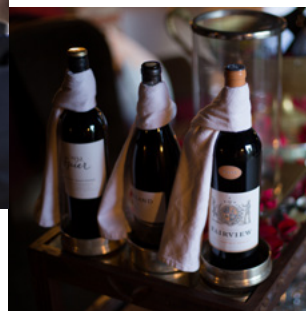
Explore the million-year old Crater on foot and encounter a fascinating forest of wildlife. Lush slopes are densely forested with nuxia, giant St John's wort and hagenia trees growing near the rim. End off your hike with a delicious picnic lunch in the Crater, a remote place of solitude and peace. (Full day, maximum 6 guests)



4

EXPERIENCE CONSERVATION WITH KOPELION

Guests of &Beyond Ngorongoro Crater Lodge have the opportunity to interact with the KopeLion conservation team to get a deeper understanding of their day to day operations and what it is really like for the Maasai to live side by side with wildlife. These experiences have to be booked in advance, and all generate a donation to KopeLion.



5

WINE STORE CELEBRATIONS

Romantic and exclusive, a private dinner is the perfect option for an intimate evening with a loved one or as a group activity with friends and family. Enjoy a private dinner including a bottle of French champagne, do a wine pairing dinner that includes a mouth-watering five-course dinner in the Wine Store or delight in a champagne testing.

OTHER ACTIVITIES TO ENJOY

CRATER BLESSING OR WEDDING

Weddings, blessings and engagements are blessed with the powerful chant of the Maasai and the view of the Crater below

CRATER VIEW WALK (1-2 HOURS)

An interpretive walk, led by a professional ranger, is a must for those looking to get even closer to the wilderness

LAKE EYASI WALK (HALF DAY, MAXIMUM 6 HRS)

Encounter unique tribes on a cultural walk to Lake Eyasi, where pelicans and flamingos converge on the shallow salt lake

OLDUVAI GORGE AND SHIFTING SANDS TOUR

Visit the world famous archaeological site of Olduvai Gorge, also known as the Cradle of Mankind, and the dune of volcanic ash that is the Shifting Sands

CULTURAL VISIT TO THE HADZABE BUSHMEN

Spend the day with the Hadzabe people, ancient hunter-gatherers living near Lake Eyasi and witness their unchanged, traditional way of life

WELLNESS TREATMENTS

Pamper yourself with a soul-soothing wellness treatment using Healing Earth products, made from all-natural ingredients sourced in Africa

COMMUNITY VISIT

Immerse yourself in the local customs and traditions of the communities to fully understand the link between conservation and community.

Activities may incur an additional charge and may need to be booked in advance

DISCOVER NGORONGORO CRATER
&Beyond Ngorongoro Crater Lodge

Seasonal highlights

TIIMING IS EVERYTHING

	JAN	FEB	MAR	APR	MAY	JUN	JUL	AUG	SEP	OCT	NOV	DEC
Exceptional game viewing	✓	✓	✓	✓	✓	✓	✓	✓	✓	✓	✓	✓
To hike into Empakai Crater	x	x	x	x	x	✓	✓	✓	✓	✓	x	x
To see Mount Kilimanjaro from the Ngorongoro Crater	x	x	x	x	x	x	x	x	x	✓	x	x
To view new-born animals and interesting predator-prey interaction	✓	✓	✓	x	x	x	x	x	x	x	x	x
To witness wild flowers bloom on the Crater floor	x	x	x	x	x	✓	✓	x	x	x	x	x
To view migratory birds	x	x	✓	✓	x	x	x	x	✓	✓	x	x
To see flamingo on the lake	x	x	x	✓	✓	x	x	x	x	x	x	x
To have the Crater almost all to yourself (low season, less crowded)	x	x	✓	✓	✓	x	x	x	x	x	✓	x
SEASONAL RATES**	\$\$\$	\$\$\$	\$\$	\$\$	\$\$	\$\$\$	\$\$\$	\$\$\$	\$\$\$	\$\$	\$\$	\$\$\$

* The \$ / \$\$ / \$\$\$ references are used to indicate rate variation and are not associated with specific values.

This is a must place to stay. From the beautifully appointed accommodation, to excellent game drives and superb food, why would you go anywhere else?))

&BEYOND GUEST



DISCOVER NGORONGORO CRATER
&Beyond Ngorongoro Crater Lodge

A day in the life

OF A GUEST

From the moment you wake up, your &Beyond experience is tailored to your interests and needs. Your butler and guide will discuss the day with you, including times and experiences, to ensure your day is as extraordinary as the location you are visiting. Here’s what to expect on a typical day on safari at Ngorongoro Crater.

TIMING

EXPERIENCE

Early morning	Early wake-up call from your butler with a hot cup of tea or coffee, and freshly baked muffins and biscuits
Early morning to afternoon	<p>Depending on what you’d prefer, there are a few game drive options available:</p> <ul style="list-style-type: none">• Early-morning game drive (typically 06h00) with a pre-packed picnic bush breakfast or brunch. You’ll return to the lodge at around 13h00 for lunch. The rest of your afternoon is spent at leisure or enjoying some of the other (optional) lodge activities• Have breakfast at the lodge before setting out on a game drive with a pre-packed picnic bush lunch. You’ll return to the lodge at around 16h30• Book a private vehicle and enjoy a full-day game drive with a pre-packed picnic bush breakfast and lunch <p><i>Game drives are done in between the NCAA (Ngorongoro Conservation Area Authority) gate times which are 06h00 to 18h00</i></p>
Optional half and full-day activities	<p>Enjoy a variety of additional experiences available at the lodge including:</p> <ul style="list-style-type: none">• A guided walk on the rim of the crater• A full day visit to the Hadzabe Tribe• Cultural Maasai village visit• Explore the Olduvai Gorge, combined with a descent into the crater• Full day hike to the Empakai Crater• Half-day Lake Eyasi visit• Interact with the Kopelion conservation team (half day)
Evening	<p>Sip on your favourite pre-dinner drink of choice before enjoying dinner at the lodge</p> <p><i>For something special, enquire about the lodge’s wine store dinners, private sundowners and cultural entertainment options</i></p>

Timings and guest experiences are guidelines only for a full day at the lodge.
Arrival day: Latest arrival time to go on an afternoon game drive is between 11h30 and 12h00 (noon) at Lake Manyara airstrip.
Departure day: No game drive – please reach out to us for additional costs and guidelines should you want this option.
All experiences are subject to availability and weather dependent. Some experiences are at an additional cost.



DISCOVER NGORONGORO CRATER

Travel Tanzania and beyond

Visiting East Africa and travelling across this vast landscape requires much thought and attention. Contact your preferred travel specialist to assist with your travel plans.

GETTING TO THE SERENGETI

Coastal Aviation, Auric Air and Regional Air Services offer daily departures from Arusha and Dar es Salaam. These flight networks link all of the major parks, reserves and andBeyond lodges.

Daily non-direct flights connect the same parks, reserves and &Beyond lodges to Zanzibar.

Flight networks connect to the Masai Mara via two points, one via Kilimanjaro and Wilson Airport in Nairobi, and the other via Tarime and Migori.

The Serengeti, Tarangire and Lake Manyara are accessible by road from Arusha.

Flights connect to Kigali via Mwanza and to Entebbe via Musoma.

TRAVEL TIMES

ARUSHA

✈

Not advised
2hrs 40min

✈

4hrs 30min
30min

✈

2hrs
20min

✈

2hrs
20min

✈

Not advised
3hrs 15min

✈

2hrs 30min
20min

✈

Not advised
2hrs

✈

Not advised
5hrs 30min

✈

Not advised
2hrs 30min

SERENGETI - KOGATENDE
(FURTHEST POINT)

6hrs
1hr 25min

7hrs
1hr 25m

Not advised
2hrs 15min

Not advised
5hrs 15min

8hrs 20min
1hr 35min

Not advised
4hrs 15min

Not advised
5hrs 30min

Not advised
4hrs 35min

Not advised
5hrs 30min

Not advised
4hrs 35min

Not advised
4hrs 55min

NGORONGORO

2hrs
Not advised*

5hrs
2hrs 35min

2hrs
Not available

4hrs
Not advised*

Not advised
5hrs 50min

Not advised
3hrs 30min

Not advised
2hrs 35min

Not advised
5hrs 30min

Not advised
5hrs 55min

LAKE MANYARA

5hrs
35min

KILIMANJARO

Not advised*

3hrs 45min
Not advised*

Not advised
2hrs 20min

Not advised
2hrs 20min

Not advised
5hrs

SELOUS
GAME RESERVE

Not advised
8hrs 25min**

Not advised
1hr 45min

Not advised*

Not advised
50min

TARANGIRE
NATIONAL PARK

Not advised
1hr 20min

Not advised*

Not advised
2hrs 5min

RUAHA
NATIONAL PARK

Not advised*

MAHALE MOUNTAINS AND
KATAVI NATIONAL PARKS

Not advised*

DAR ES SALAAM
AND COAST

Zambia

Malawi

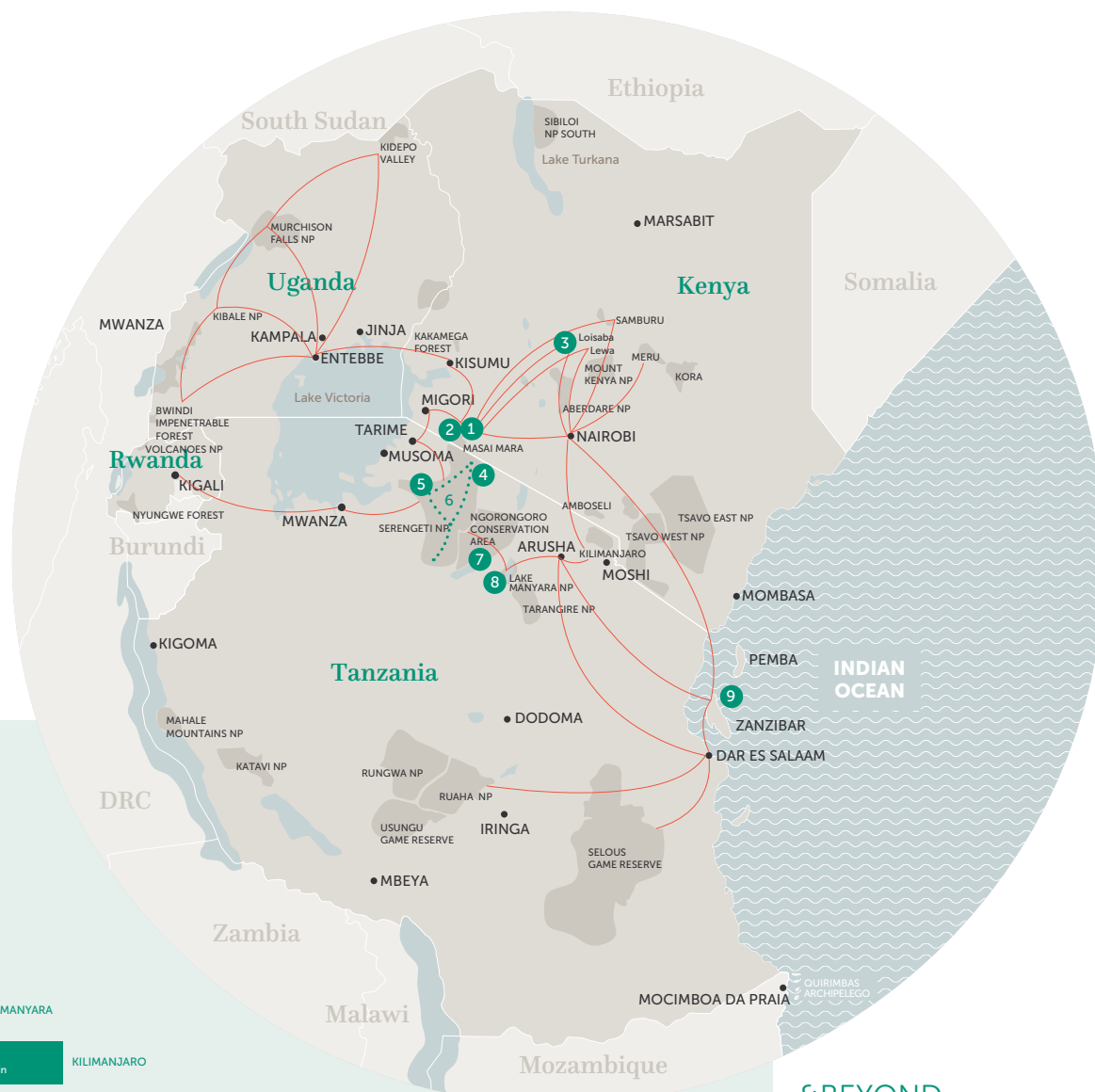
Mozambique

●MBEYA

SELOUS GAME RESERVE

MO

* Poor connection due to: Layover time / no connection / peak periods only / private charter required. ** Includes flight to Manyara and 2hr road transfer time. Disclaimer: All flights may include multiple stops and scheduling is a guideline – times will vary and scheduling is coordinated mainly by operations teams on the ground. Flight schedules are more limited in off-peak periods. Above times are based on best-practice logistics and exclude transfers to and from lodges.



&BEYOND LODGES

KENYA

- 1 Bateleur Camp
- 2 Kichwa Tembo Tented Camp
- 3 Suyian Lodge

TANZANIA

- 4 Klein's Camp
- 5 Grumeti Serengeti River Lodge
- 6 Serengeti Under Canvas
- 7 Ngorongoro Crater Lodge
- 8 Lake Manyara Tree Lodge
- 9 Mnemba Island

GENERAL ENQUIRIES

+27 11 809 4300

contactus@andBeyond.com

REGIONAL ENQUIRIES

Africa: africa.reservations@andBeyond.com

Asia: southasia.reservations@andBeyond.com

South America:

southamerica.reservations@andBeyond.com

PRESS ENQUIRIES

media@andBeyond.com

TRAVEL TRADE

enquiry@andBeyond.com



andBEYOND



[@andbeyondtravel](https://www.instagram.com/andbeyondtravel)
[#seewhatliesbeyond](https://www.instagram.com/andbeyondtravel)

andBeyond.com